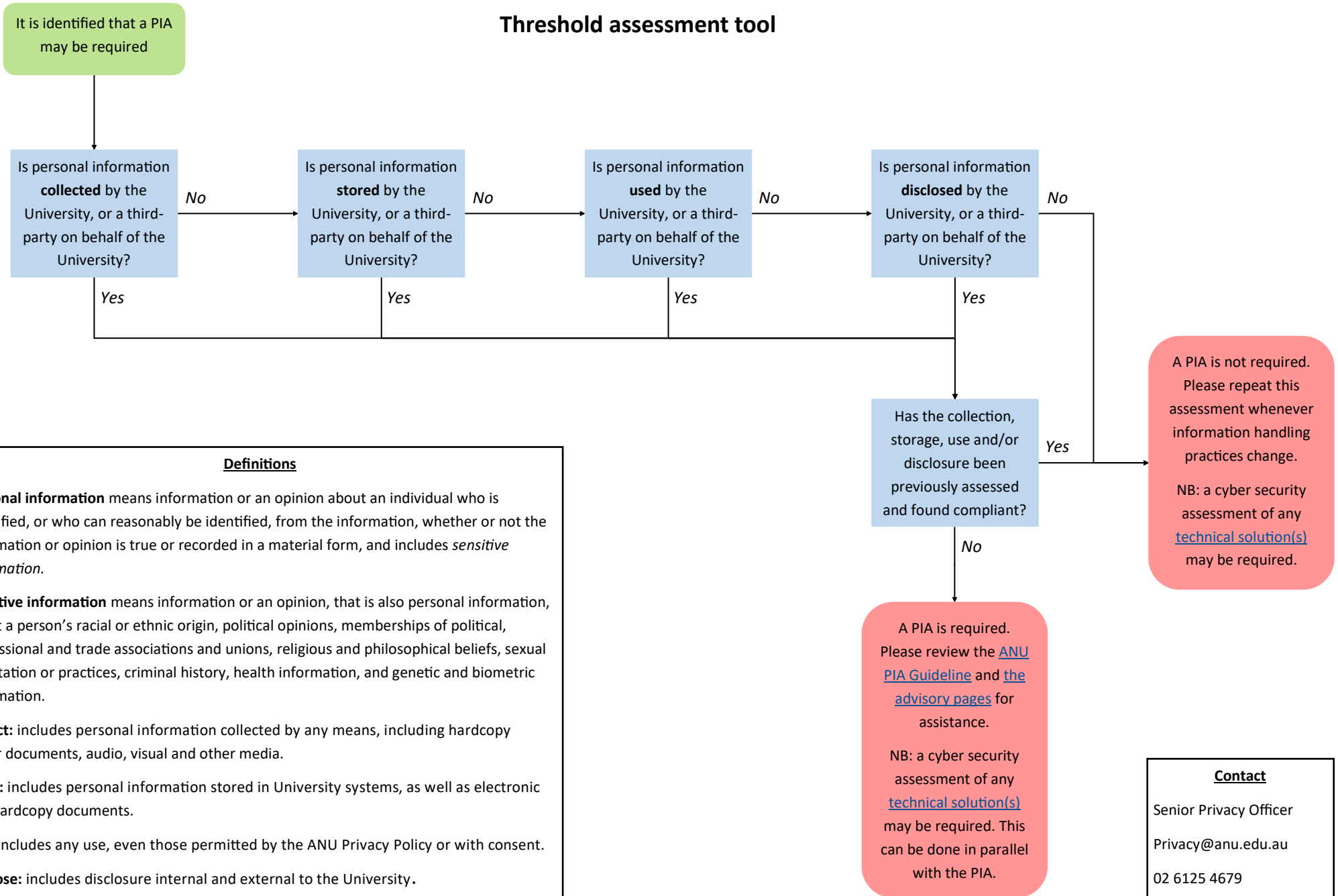


Privacy Impact Assessment (PIA)

Threshold assessment tool



Definitions

Personal information means information or an opinion about an individual who is identified, or who can reasonably be identified, from the information, whether or not the information or opinion is true or recorded in a material form, and includes *sensitive information*.

Sensitive information means information or an opinion, that is also personal information, about a person’s racial or ethnic origin, political opinions, memberships of political, professional and trade associations and unions, religious and philosophical beliefs, sexual orientation or practices, criminal history, health information, and genetic and biometric information.

Collect: includes personal information collected by any means, including hardcopy paper documents, audio, visual and other media.

Store: includes personal information stored in University systems, as well as electronic and hardcopy documents.

Use: includes any use, even those permitted by the ANU Privacy Policy or with consent.

Disclose: includes disclosure internal and external to the University.

Contact

Senior Privacy Officer
 Privacy@anu.edu.au
 02 6125 4679