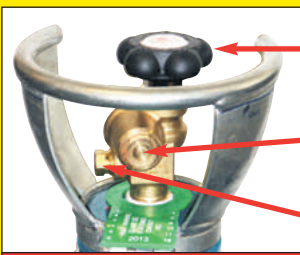


cylinder valve safety



Back view of typical cylinder valve

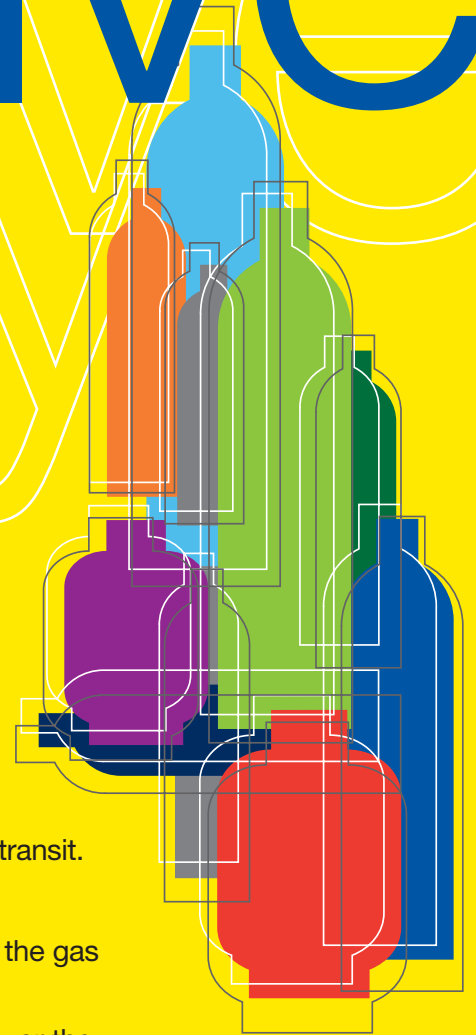
Cylinder Valve Hand-wheel

Back-plug

Bursting Disc



Operator wearing PPE in safe position



When working with cylinders or operating cylinder valves, ensure that you wear appropriate protective clothing - gloves, boots, and safety glasses.

When moving cylinders, ensure that the valve is not accidentally opened in transit.

Before operating a cylinder valve:

- Ensure that the system you are connecting the cylinder into is suitable for the gas and pressure involved.
- Ensure that any accessories (such as hoses attached to the cylinder valve, or the system being connected to) are securely connected. A hose, for example, can potentially flail around dangerously if it's accidentally pressurised when not restrained at both ends.
- Stand to the side of the cylinder so that you are not in line with the back of the cylinder valve. This is in case a back-plug is loose or a bursting disc vents. The correct stance is shown on the diagram above.

When operating the cylinder valve:

- Open it by hand by turning the valve hand-wheel anti-clockwise. Use only reasonable force.
- Ensure that no gas is leaking from the cylinder valve connection or the system to which the cylinder is connected. Do NOT use ammonia based leak detection fluid as this can damage the valve. Approved leak detection fluid can be obtained from a BOC Gas & Gear centre.
- When finished with the cylinder, close the cylinder valve by hand by turning the valve hand-wheel in a clockwise direction. Use only reasonable force.

Remember, NEVER tamper with the valve.

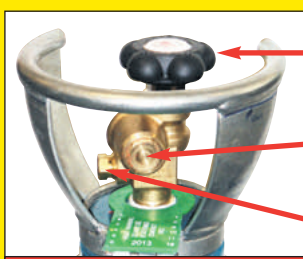
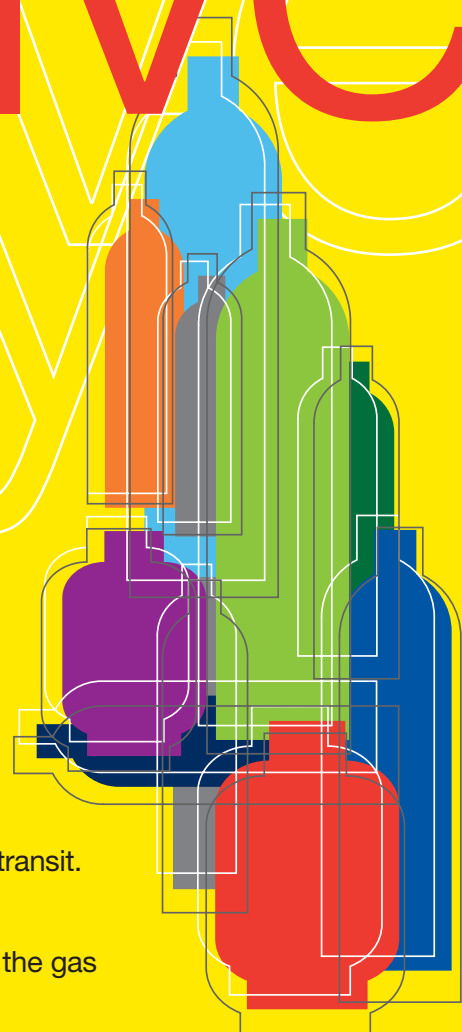
If you suspect the valve is damaged do NOT use it.

Report the issue to BOC and organise for the cylinder to be returned to BOC.

**In case of emergency,
call 000 and BOC on 1800 653 572**



cylinder valve safety



Back view of typical cylinder valve

- Cylinder Valve Hand-wheel
- Back-plug
- Bursting Disc



Operator wearing PPE in safe position

When working with cylinders or operating cylinder valves, ensure that you wear appropriate protective clothing - gloves, boots, and safety glasses.

When moving cylinders, ensure that the valve is not accidentally opened in transit.

Before operating a cylinder valve:

- Ensure that the system you are connecting the cylinder into is suitable for the gas and pressure involved.
- Ensure that any accessories (such as hoses attached to the cylinder valve, or the system being connected to) are securely connected. A hose, for example, can potentially flail around dangerously if it's accidentally pressurised when not restrained at both ends.
- Stand to the side of the cylinder so that you are not in line with the back of the cylinder valve. This is in case a back-plug is loose or a bursting disc vents. The correct stance is shown on the diagram above.

When operating the cylinder valve:

- Open it by hand by turning the valve hand-wheel anti-clockwise. Use only reasonable force.
- Ensure that no gas is leaking from the cylinder valve connection or the system to which the cylinder is connected. Do NOT use ammonia based leak detection fluid as this can damage the valve. Approved leak detection fluid can be obtained from a BOC Gas & Gear centre.
- When finished with the cylinder, close the cylinder valve by hand by turning the valve hand-wheel in a clockwise direction. Use only reasonable force.

Remember, NEVER tamper with the valve.

If you suspect the valve is damaged do NOT use it.

Report the issue to BOC and organise for the cylinder to be returned to BOC.

**In case of emergency,
call 000 and BOC on 1800 653 572**

