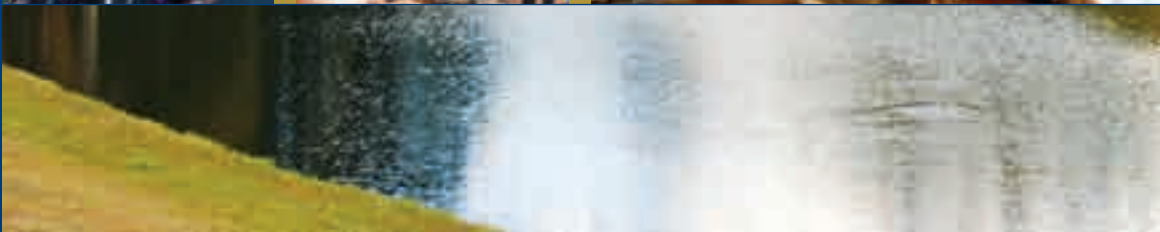
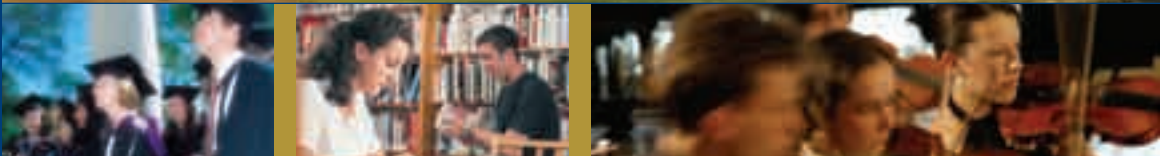


# ANU ENDOWMENT FOR EXCELLENCE ANNUAL REPORT 2006





# ANU ENDOWMENT FOR EXCELLENCE

## ANNUAL REPORT 2006

## THE AUSTRALIAN NATIONAL UNIVERSITY

The Australian National University (ANU) was established by the federal parliament in 1946 specifically to lead the development of the intellectual capacity of the nation through research and postgraduate training in line with the best international standards. In 1960 ANU accepted responsibility for research-led undergraduate education at the same high standards.

As the specially chartered national university of the federal government, ANU is characterised by a unique concentration of effort in the fundamental disciplines, the national recruitment of students, accessible infrastructure and collaborative scholarly and business networks.

ANU advances the national intellectual and creative capacity through broad-based research and research-led education:

- in the disciplines fundamental to all knowledge – the humanities, the sciences, the social sciences
- in a spectrum of professional disciplines and the creative arts
- by studying Australia in its various contexts.

ANU recognises that its capacity to support, develop and critique Australian society will be greatest when academic freedom is exercised in a manner consistent with a responsible search for knowledge and its dissemination.

The University recognises that its greatest assets are its staff and students.

The planning framework for ANU is one in which University goals and objectives are met by creating an environment in which staff, students and visitors can achieve their personal goals.

# CONTENTS

<b>Board of Governors 2006</b>	6
<b>President's Report</b>	7
<b>Donations to the ANU Endowment for Excellence</b>	9
<b>Bequests</b>	11
<b>Investment Performance Review</b>	12
Current Investment Strategy	13
Funds by Category	14
Universiy Funds	15
<b>Inter-institutional Relations</b>	15
<b>Named Foundations</b>	17
<b>Tillyard Award</b>	
<b>Students, staff and projects supported in 2006</b>	20
Scholarships and Prizes 2006	22
Endowed Funds Supporting Renewal and Research	36
<b>Appendices</b>	
A.    History and Overview of Endowment	39
B.    Members of the Endowment for Excellence	40
C.    (i) Income Statement	48
(ii) Balance Sheet	49
(iii) Financial Report Summary	50

## BOARD OF GOVERNORS 2006

**Mr Ian Grigg AM, BA (ANU),** President. Senior Advisor to Board of Directors, Toyota Australia and former Prime Minister's Special Automotive Envoy.

**Ms Carol Austin BEc(Hons) (ANU), BSc (Monash), DipEd (UPNG).** Investment Services Director, Contango Asset Management Ltd., Investment Banker and Economist.

**Mr Tony Ayers AC, BA (Melb).** Former Secretary, Department of Defence. Former Chairman Canberra Raiders.

**Dr Allan Hawke AO, BSc (Hons), PhD (ANU), FAICD, FAIM, FIPAA.** Former Secretary, Departments of Veterans' Affairs, Transport and Regional Services, and Defence. Former Australian High Commissioner to New Zealand. Appointed as Chancellor, ANU, on 4 February 2006.

**The Hon Justice Annabelle Bennett AO, BSc (Hons), PhD (Syd), LLB (NSW).** Pro-Chancellor, ANU. Judge, Federal Court of Australia. Supreme Court of the ACT - Additional Judge. Former President, Chief Executive Women (NSW) and Director, Sydney Children's Hospital Foundation, Member of the Board of the Centennial Park and Moore Park Trust.

**Mr Tony Hartnell AM, BEc, LLB(Hons) (ANU), LLM (George Washington).** Solicitor and Company Director. Partner, Atanaskovic Hartnell. Former Chairman, Australian Securities Commission.

**Mr Philip Holt AM, LLB (ANU), FCPA, FAICD.** NSW Chairman Young Achievement Australia. Company Director. Former Managing Director, Australian Business Ltd. Former Chair, Commercial Tribunal, and Commissioner, Consumer Affairs.

**Professor Ian Chubb AC, MSc, DPhil (Oxon), Hon DSc (Flinders),** Vice-Chancellor and President, ANU. Chair, Group of Eight Universities. Past President, Australian Vice-Chancellor's Committee.

**Ms Louise O'Rance,** Executive Officer, Postgraduate and Research Students Association (to June 2006).

**Ms Laura Crespo,** President, ANU Students' Association (from June 2006).

### **Executive Director: Joan Uhr**

Director, Foundation and Alumni Relations

I Block, Building 003

The Australian National University, Canberra ACT 0200

T: +61 2 6125 2483/5691 | F: +61 2 6125 9698 | ABN 52234 063 906 | DGR 90010639

### **Former Governors:**

**Dr Rod Eddington (1998–April 2000 (resigned))**

**\*Ms Kim Vella (ANU Student Association Representative (1998 to December 1999))**

**Senator The Hon Margaret Reid (1998–June 2002)**

**Ms Ouma Sananikone (May 2002–Dec 2004)**

**\*Mr Matthew Tinning, Postgraduate and Research Students' Association (PARSA) Representative (December 1999 to 30 Jun 2001)**

**\*Ms Rahni Ennor, PARSA Representative (July 2001 to June 2002)**

**\*Mr Lachlan Campbell, PARSA Representative (July 2002 to December 2002)**

**\*Mr Stephen Michaelson, ANUSA Representative January 2003 to December 2003**

**Emeritus Professor Deane Terrell AO, Vice-Chancellor (1996–2000)**

**The Hon Emeritus Professor Peter Baume AO, Chancellor (1996–2005)**

---

\* Students representation on the Board of Governors rotates between the two Associations on an 18 month basis

## PRESIDENT'S REPORT

The Australian National University's Endowment for Excellence had an outstandingly successful year in 2006, and for this we acknowledge and sincerely thank all of our donors. With their generous support and contributions the Endowment was able to fund:

- scholarships and prizes for 412 students from the full range of faculties
- bursaries for 36 students to assist them in continuing their studies
- twenty-two academic positions fully or partially funded across a wide range of disciplines
- several visiting fellowships in science, medical research, asian studies, economics, law, philosophy, social science, Australia-Japan relations, mathematics and Indigenous studies.

These scholarships, prizes, bursaries and academic appointments were funded from the Endowment's 219 endowed accounts as well as annually funded contributions.

Support for the Endowment in 2006 was considerable as new donations totalled over \$7 million, the largest annual intake of funds since the Endowment was established in 1996.

Growth of the University's Endowment during 2006 is highlighted by the following statistics:

- Total funds within the Endowment grew by 14.5 per cent, an increase of \$27.38 million over 2005, bringing total funds within the Endowment to \$216.11 million.
- Individual donor funds grew by 22 per cent, an increase of \$20.72 million over 2005, bringing donor funds available for distribution by the Endowment for Excellence to \$114.65 million:
  - funds supporting research and renewal increased by 18 per cent
  - funds supporting scholarships and prizes increased by 31 per cent
  - funds supporting named foundations increased by 20 per cent
  - funds supporting inter-institutional arrangements increased by 24 per cent.
- Being invested through the University's Long Term Investment Pool, the Endowment received an extremely good return of 15.5 per cent for 2006.

Interest in the University's bequest program continued to increase during 2006 with 68 Patrons in the program at the end of the year. A number of these donors chose to make advance payments into the Endowment to support 'Living Bequests', enabling them to see and meet students who will continue to benefit from the enduring legacies left to the University through their will. A story in this annual report on the recent bequest to the University by Helen and Stephen Wurm showcases the ways in which patrons can support scholarship at the University beyond their lifetime.

During 2006 endowed memorial funds were established to honour the memories of colleagues, friends and loved ones. The Gareth Long Memorial Fund will support research in the ANU Medical School and the Phillipa Weeks Memorial Fund will provide scholarships for students from rural and regional Australia to attend the ANU College of Law. As a mark of the high regard in which these individuals were held, the funds have already attracted significant donations and are continuing to grow well. A story on the Phillipa Weeks Memorial Fund in this annual report details just one example of the way in which an endowed fund can be used to honour the memory of a valued colleague, teacher or student at the University.

Support for scholarships and prizes for Indigenous students and research into Indigenous studies at ANU has continued to grow strongly through the following Endowment for Excellence funds:

- Centre for Aboriginal Economic Policy Research Indigenous Visiting Fellowship Scheme
- Rotary Canberra East Alf Gillespie Scholarship for a third year undergraduate student studying Indigenous Australian Culture
- Joseph and Lindsay Croft Scholarship for academically excellent undergraduate Indigenous Australian students in financial need
- Elsbeth Young Bequest Fund for undergraduate and postgraduate Indigenous students
- Judith Wright Award Fund for undergraduate and postgraduate Indigenous students
- Neville Bonner Indigenous Scholarship Fund for an Indigenous Australian student undertaking honours in political science
- Ken Wanganeen Fund for an Indigenous Australian student enrolled in the Australian National Internships Program
- Nugget Coombs Forum for Indigenous Studies for projects addressing the research priorities of the North Australia Research Unit
- Freilich Indigenous Law Scholarship for an undergraduate or postgraduate Indigenous Australian student studying Law
- Duguid Aboriginal Travel Scholarship to support an Indigenous Australian student to travel to national and international conferences
- The Baume Fund awarded on alternate years to an Indigenous Australian student to travel and present their research at an international conference.

These funds are distributed through the Jabal Indigenous Higher Education Centre and the relevant ANU Colleges.

Throughout 2006 several events were hosted nationally and internationally for ANU alumni and friends. In July a reception was held in the newly opened The John Curtin School of Medical Research building to thank Canberra donors personally for their continued support. Internationally, events in Cambridge, Oxford and London were a particular highlight with over 220 alumni and friends attending. Events were also held in Singapore, Jakarta, Beijing, Shanghai, New Zealand and San Francisco, which enabled us to reconnect with over 885 of the international ANU community of alumni and friends.

I am grateful for the time and energy contributed by my colleagues on the Board, and by the staff of the Office of Foundation and Alumni Relations, which enabled us to have such a successful year in 2006. We look forward to another year of growing funds to support and enrich the work of Australia's national university in 2007.

Ian Grigg AM

President

## DONATIONS TO THE ANU ENDOWMENT FOR EXCELLENCE

To all our benefactors we express our heartfelt thanks. A full list of members of the endowment is at Appendix B.

We also acknowledge the generous support of our donors who wish to remain anonymous but who make regular contributions to our many funds. We thank the generous donors who gave to the appeals for the Inter Institutional Organisations (such as Cambridge Australia Trust and Oxford Australia Scholarship Funds); and to the annually funded prizes and scholarships.

We are proud to have established in 2006 a number of funds in memory of people who have served the wider ANU community. Friends and family have chosen to honour these people by establishing special funds to ultimately offer scholarships for research and training in specialist fields. These funds include:

The Gareth Long Memorial Fund in the ANU Medical School

The Philippa Weeks Memorial Fund in the ANU College of Law

Oliphant Fund in the Research School of Physical Science and Engineering.

## A MEMORIAL SCHOLARSHIP ESTABLISHED TO CELEBRATE THE WORK OF PROFESSOR PHILLIPA WEEKS



Phillipa Weeks spent much of her life being too young. She won her first major scholarship in 1963, a Canberra-Goulburn Archdiocese Bursary to enter first year of high school as a boarder at Our Lady of Mercy College Goulburn, but had to forfeit it because she was only 10. Six years later, having completed her schooling at Harden Catholic Primary School, Cootamundra Catholic High School (to Year 10), and Cootamundra High School (to Year 12), she won a prestigious National Undergraduate Scholarship to attend The Australian National University at the age of only 16—too young even to have a drink, legally, at the University Union bar. On 4 August 2006, she died of cancer at the age of only 53—far too young for a person whose outstanding achievements to that point, and whose remarkable impact on those around her, only underlined how much more she still had to give.

Phillipa graduated from ANU in 1974 with a Bachelor of Arts, with first class honours in history. Phillipa tutored in history at both Flinders University of South Australia and ANU before joining Foreign Affairs. Her career with the Department was short as she returned to ANU to pursue a law degree. She graduated with first class honours in law in 1979, including amongst other prizes, the ACT Supreme Court Judges Prize for the best honours result on graduation. Whilst still studying, Phillipa undertook a number of teaching and administration positions in the Faculty of Law. Phillipa's expertise in both property law and labour law earned her a lot of respect amongst her colleagues in the law fraternity.

Phillipa was appointed as a Professor at ANU in 2001. Her contribution not only to ANU but also the much wider community will be long remembered. A measure of the affection and esteem in which Phillipa was held is that, at the ANU College of Law Annual Alumni Dinner on 25 August 2006, a group of alumni spontaneously initiated some fund-raising for a scholarship in Phillipa's memory. Most likely, the scholarship will assist intending law students with a country or regional background not dissimilar from Phillipa's own formative experience in Harden and Cootamundra.

Extracts from Obituary written by Professor Michael Coper, Robert Garran Professor and Dean, ANU College of Law

## BEQUESTS

The Bequest program continued to be well supported in 2006 and an active bequest management program began. Bequests provide future support for professorial chairs, scholarships and research activities. Current bequests cover a wide range of disciplines and purposes including the humanities, art and music, medical research, science, mathematics, the social sciences and the environment.

By the end of 2006 the number of Patrons supporting the Endowment for Excellence by pledging a bequest to the University had grown to 68, with 15 new Patrons joining the program during the year. Their support is a significant long-term commitment to the University and funds research activities in medicine, astronomy and astrophysics, humanities, and economics, as well as support for Indigenous students from regional Australia.

A list of Patrons and the activities that their bequest supports can be found in Appendix B.

### A BEQUEST TO ANU THAT ENSURES LIFE'S LANGUAGE STUDY LIVES ON

The personal papers of the first linguistics professor to be appointed to ANU, Stephen Wurm, and his wife Helen, make for an interesting collection. From the linguistic intricacies of rare languages to scrapbooks on Austrian opera, this large personal holding, bequeathed to the University in 2005, has been comprehensively catalogued thanks to a special archiving project. For the archivist charged with cataloguing the largest personal collection yet to be bequeathed to the University, opening every box was like a 'treasure trove'.

Stephen Wurm was a renowned linguist, and the first professor of linguistics at ANU. As head of the Department of Linguistics from 1968 to 1987, he played a significant role in establishing and growing the Department and the field in Australia. He was an ongoing visitor to the Department until his death in 2001.

Stephen and Helen met at university in Vienna, where Helen was completing a PhD on social anthropology. She is respected for her book on Aboriginal bark painting, and for her work for a number of museums including the Australian Institute of Aboriginal Studies (now the Australian Institute for Aboriginal and Torres Strait Islander Studies) on their collections of artefacts.

When Helen died in 2005, the Wurm estate was bequeathed to ANU. The bequest included the Wurm's extensive book collection, which now is held by the Menzies Library, and their papers.

Making the collection known to and accessible for academics is the main aim of the University Archives, particularly because of its wealth of primary material on languages including tapes of native speakers, notes on language, photographs and movie recordings. The University Archives also kept the Wurms' movie projector in the event the movie recordings need to be replayed.

"The research and linguistic materials are certainly very important and we hope that we can get the word out there that the Wurms' collection is available," Maggie Shapley, University Archivist, says.

"But it's also an important collection from the point of view of the history of ANU. Stephen's documents include communications on the administrative elements of the Linguistics Department, annual reports of the department and his contributions to internal reviews. Helen's collection is also intriguing and valuable. There's her own research materials and her recording of their field trips, photographs and diaries, and there's also her beautiful scrapbooks of the theatre in Vienna in the 1940s. It really is a great collection that we're gratified to have."

Extracts from *ANU Reporter*: Autumn 2007

## INVESTMENT PERFORMANCE REVIEW FOR THE YEAR ENDED 31 DECEMBER 2006

The investment funds of the Endowment for Excellence are invested through the University's Long Term Investment Pool (LTIP). The LTIP is an actively managed balanced fund with exposure to the major asset classes. The funds are managed by the Investment Office which is responsible for the preparation of the investment strategy and other asset allocation and investment policy papers for consideration by the Investment Advisory Committee (IAC). The IAC reports to Finance Committee which in turn reports to the ANU Council.

The Investment Office, with the support of the IAC, remained positive on the prospects for financial markets in 2006 particularly the outlook for equity markets, property and alternative investments such as infrastructure and private equity. The asset allocation adopted for the Long Term Investment Pool reflected this positive outlook. Within the domestic equity markets the University maintained an overweight position in the major diversified miners which had a slightly negative impact on the LTIP domestic equity portfolio compared to the ASX 300 index. However the University's higher than average weighting to the equity sector offset this in terms of the total value added by this sector. The University remains overweight major diversified resources at the start of 2007.

During the year the allocation to overseas equities and alternative investments was increased. At 31 December 2006 the allocations to the various investment categories was: domestic equities 40.2 per cent, overseas equities 20.3 per cent, listed property trusts 5.9 per cent, fixed interest 8.9 per cent, direct and unlisted property 2.3 per cent, infrastructure 1.1 per cent, other alternative investments 3.0 per cent and cash/other 18.3 per cent. The high weighting in cash reflected the low weighting in fixed interest (due to low bond yields) and the cautious approach to alternative investment exposure (due to limited opportunities at a reasonable price).

In late 2005 Access Economics was commissioned by the University to undertake an independent review of the investment operations. The review provided a positive endorsement of the existing operations and the past investment performance. It also made a number of recommendations including a review of the Investment Objective and a review of the asset allocation policy with a view to increasing the exposure to the Alternative Investments sector. The IAC was asked by Finance Committee to examine these issues and in early 2006 a new Investment Objective was developed which is more prescriptive and specifically refers to a targeted rate of return over the long term. The new Investment objective for the LTIP, approved by Finance Committee at its meeting of 1 December 2006 is:

The University Investment Objective is to obtain the maximum possible long term return on available capital consistent with achieving a minimum return to the University of CPI plus 5.5 per cent over rolling 5 year periods and ensuring a negative annual real return occurs less frequently than once every 6 years on average. Over the shorter term, it is recognised that there will be periods when investment returns do not meet this objective. Accordingly the University should also aim to achieve returns (after fees and tax) that are in excess of the median return of other funds with comparable risk and return profiles as measured by independent industry surveys over rolling 3 year periods. The portfolio will contain sufficient liquid assets to pay the financial obligations of the LTIP, including that relating to the Commonwealth Superannuation Scheme, as they fall due.

Economic growth was stronger than predicted in most major economies in 2006. The latest available data indicate the US grew by 3.4 per cent, Europe by 2.7 per cent, Japan by 2.3 per cent and China by 10.7 per cent. Inflation appears to be slowing in the US and Europe, and remains very low in Japan.

The US Federal Reserve has kept the official cash rate on hold at 5.25 per cent since July 2005 but remains vigilant on inflation and tight labour markets. In Europe the European Central Bank may raise rates again in early 2007 following on from five 0.25 per cent rises in 2006 that increased the official rate to 3.5 per cent by year end. The Bank of Japan raised its official cash rate to 0.25 per cent in 2006 for the first time since 2001 in the wake of positive inflation data and signs of more sustainable economic growth. Late in the year core inflation again turned downward suggesting further rate increases will be moderate in the short term.

The LTIP portfolio again provided very good investment returns in 2006. The total return for investors in the LTIP was 15.5 per cent. This return was very competitive relative to commercial balanced funds. For example the median return of the 50 largest superannuation funds in the SuperRatings survey was 13.6 per cent and for the Mercer Balanced Funds survey the median return was 14 per cent.

## CURRENT INVESTMENT STRATEGY

The outlook for most financial markets looks relatively benign at the beginning of 2007. Equity valuations in Australia and major overseas markets remain reasonable despite good performances in recent years. Although profit growth is expected to slow this year, strong global liquidity, low bond yields and corporate restructuring is likely to support markets. China and India will continue to grow well above western standards as their economies develop over the medium to longer term. This will support world growth through demand for raw materials, capital goods and services.

Government and corporate bonds remain expensive as a result of high demand flowing from the excess liquidity in world financial markets. Major energy exporters in the Middle East, Russia and elsewhere are constantly seeking low risk assets to invest the large revenue flows from high oil and gas prices. China and Japan continue to run large current account surpluses causing large build ups of foreign exchange reserves, which are often held in the form of government bonds. Ten-year government bonds were trading at yields below the cash rate in the US and Australia and not much above cash in Europe at the end of 2006 and in early 2007. Corporate bond yields, including low investment grade bonds, are trading at historically low spreads to government debt as risk premiums are pushed down by the weight of money. There appears no imminent threat to this low bond yield environment which continues to support other asset classes through cheap funding costs.

In Australia industrial shares have moved above longer term valuations and appear on the expensive side of fair value. This situation has been driven by speculation surrounding possible private equity valuations and also the rapidly increasing pool of superannuation deposits seeking investment opportunities through the managers of those funds. Offsetting the high valuations in the industrial sector are the below average valuations available in the big diversified miners in Australia. Although commodity prices may fall from current high levels over the next few years the valuations for the commodity producers have already discounted this possibility. The risk for investors underweight these companies is that demand for commodities will remain strong from countries such as China and India and commodity prices will continue to remain at higher than expected levels generating super profits for the established mining companies.

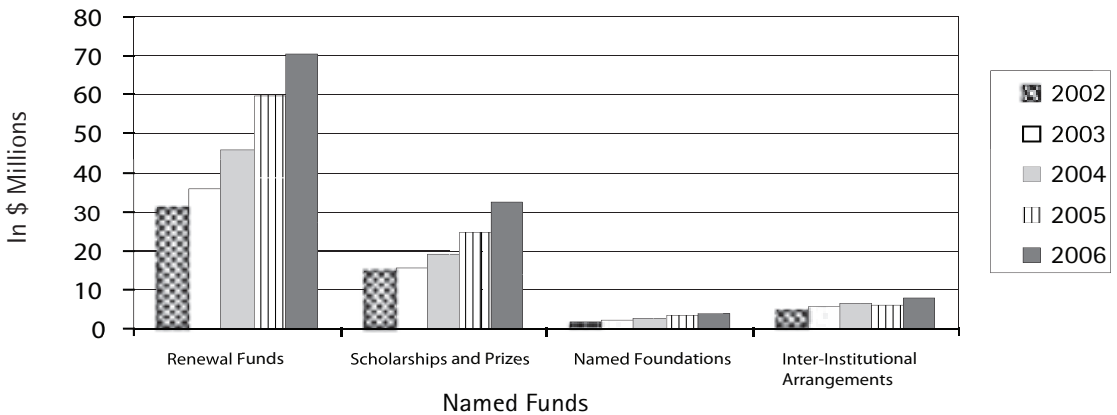
The LTIP enters 2007 with an asset allocation tilted towards growth assets. The current levels of 40 per cent domestic equities, 20 per cent overseas equities and 6 per cent listed property trusts remain appropriate. Opportunities in the alternative investments sector will continue to be investigated with the target of reaching 15 per cent to 20 per cent by the end of the year. Fixed interest will be maintained at levels of around 10 per cent and cash will be reduced as opportunities are identified in other sectors particularly in alternative investments.

## FUNDS BY CATEGORY

The Endowment for Excellence has four broad categories within which funds are maintained and which receive the majority of external donations that directly benefit the University. The most significant categories and the amounts as of 31 December 2006 are listed below:

Renewal Funds	Scholarships Et Prizes	Named Foundations	Inter-Institutional Arrangements
\$70.58 million	\$32.29 million	\$4.09 million	\$7.67 million

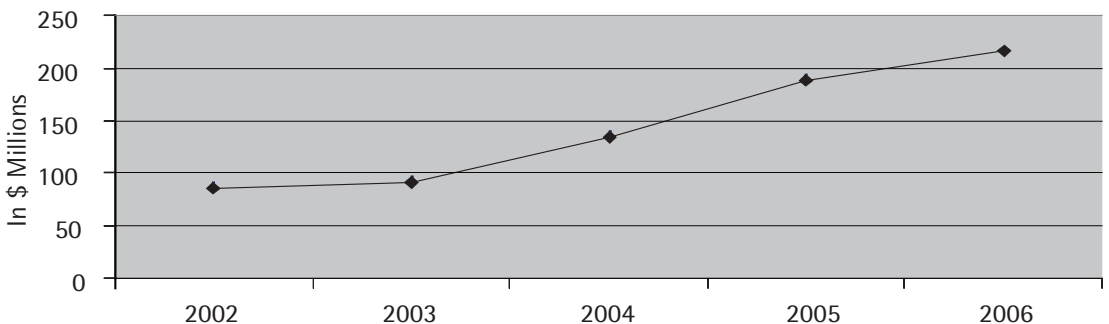
### Endowment Funds by Category



### Total Endowment Funds for 2006

Endowment for Excellence	Univarsity Funds	Total Endowment
\$114.65 million	\$101.46 million	\$216.11 million

### Total Endowment Funds



Totals as at 31 December

## UNIVERSITY FUNDS

The Vice-Chancellor's Renewal fund, ANU Salary Indexation Reserve and ANU CSS Reserve have been established in the Endowment with University Funds. As the funds were not sourced from external donors, the Vice-Chancellor may resolve to apply the funds for other University purposes outside the Endowment.

### Disability Support Fund

The Disability Support Fund provides appropriate support for students with disabilities that would not be possible without this resource. The fund has enhanced the access to equitable, effective and successful study for students with disabilities at ANU. The Disability Services Centre (DSC) provided services to a total of 688 students in 2006. A total of 126 students who had been registered with the DSC graduated in 2006: 57 graduated in July, and 69 graduated at the December ceremony. Many of these students would have benefited from the resources made available by the Disability Support Fund.

In 2006, the Disability Support Fund has provided an extremely valuable source of funding for a range of activities associated with the provision of support for students with disabilities. Although the description of the services offered may sound simple they provide an essential and vital resource for the students, who need such services to achieve their potential. Activities have included:

- the provision of note taking, scanning and mentor services for higher need students
- the purchase of upgrades to multi-user site licences for assistive software to enable the integration of the full suite of assistive technology programs into the standard student image on all InfoCommons PC computers
- the purchase of assistive software to be loaned to individual students
- the purchase of equipment for shared use by students
- the purchase of a mobility scooter for loan to students
- the purchase of computers for loan to students with mobility or health impairments in order to facilitate effective access to studies and resources
- the provision of internet access for students who are unable to fully access campus services
- upgrading the DSC equipment pool for the use of, and loan of equipment to students.

## INTER-INSTITUTIONAL RELATIONS

In recognition of its wider national role and responsibilities ANU manages a number of funds linking the University and Australians with other major institutions. No matching funds have been provided and the institutions are responsible for their own fundraising.

These include:

- The Oxford Australia Scholarship Fund assists Australian students to study at Oxford University
  - James Fairfax Oxford Australia scholarships, are awarded every year to at least two students for one to three year courses. In 2006, five students were appointed: Patrick Delaney Bachelor of Civil Law (BCL), Anthony Jones (BA Jurisprudence), Olivia Murphy (DPhil English), Erin Schwarz (M St English Language and Literature) and Shelley Wickham (DPhil Life Sciences).

- In collaboration with the British High Commission, two students, Alexander Phipps and Catherine Eakin, read for BCLs in the academic year 2005–2006 supported by the British Chevening-Oxford Australia Scholarships.
- The University College Old Members' Fund is supporting Kwan Hee Lee for a DPhil in Physics at Oxford. Kwan Hee Lee will have his viva voce examination in March 2007.
- Thanks to the Sir Vincent Fairfax Family Foundation, Jonathan Lo and Jason Wong have completed their studies for DPhil in Engineering Science and DPhil in Physical Chemistry respectively in 2006. The two Vincent Fairfax Life Sciences scholars were appointed in 2003.
- The Magdalen College Oxford Australia Fund appointed its first scholars in 2006. James Goudkamp was awarded the first Magdalen College Scholarship to initially read for a BCL, followed by a M Phil in Law once the BCL has been completed.
- During the year 2006, there were 16 Australian Students in Oxford supported by the Oxford Australian Scholarship fund. This brings the total number of scholars supported by the generosity of the donors to the Oxford Australia Fund to 40 since the first scholars were appointed in 1998.
- Cambridge Australia Trust (CAT) to support Australian students at Cambridge: In 2006,
  - Six CAT (Poynton) Scholarships were awarded for Australian graduates to undertake their PhD's at Cambridge.
  - One Sir Ronald Fisher Scholarship was awarded. This is a new award made to commemorate the memory of Professor Sir Ronald Fisher, a world famous mathematical statistician and geneticist who retired from Cambridge University to a joint appointment at the University of Adelaide and the CSIRO in Adelaide. The scholarship is to be funded by Emeritus Professor Henry Bennett of Adelaide University, but to advance its inauguration the Cambridge Commonwealth Trust funded the first award.
  - Three Gates Scholarships were awarded to CAT applicants by the Cambridge Commonwealth Trust.
- Asian Studies Association of Australia Inc Fund encourages and rewards excellence in scholarship in Asia and to advance and develop interest in the field of Asian Studies throughout Australia.
- Hans Mol Endowment Fund supports and encourages research and publications in the social scientific study of religion.
- Robert Gordon Menzies Scholarship Fund was awarded to:
  - Joanna Davidson who is studying a Masters of Law (LLM) at the Harvard Law School at Harvard
  - Bill Cleddenin Award was awarded to Scott Griffin who is studying a Masters of Business Administration at the Harvard Business School at Harvard
  - Tracey Slatyer who is studying a PhD in Physics at the Graduate School of Arts and Sciences at Harvard
- The Neville Bonner Memorial Scholarship was awarded to Ross Bates who is studying Bachelor of Arts/Law Honours in Politics at the University of New South Wales.
- ACT Orthopaedic and Musculoskeletal Research Foundation transferred funds to establish the The Reginald Kitchin Scholarship Fund. The award is expected to be made in 2007 or later.

- Scandinavian Cultural Fund aims to celebrate and promote better relations between Australia and the Scandinavian countries. The Fund makes grants in consultation with the Ambassadors of the Scandinavian countries under the broad oversight of the National Europe Centre. Ms Altaire Semmens was the successful recipient of the 2006 award. She participated in an exchange program at Oslo University.

## NAMED FOUNDATIONS

Named Foundations may be established by a single donation or number of donations as recommended by the Board of Governors of the Endowment. The Foundations have a charter approved by ANU Council and support specific disciplines or activities.

### Australian Foundation for Mental Health Research

Established in 2002, to support research into the prevention and treatment of mental health problems in the community and to support scholarships at the Centre for Mental Health Research.

**Directors:** The Hon Margaret Reid AO (Principal Director)(Chair), Mr Tim Chadwick, Professor Helen Christensen, Dr Kathy Griffiths, Ms Virginia Hansen (Chancellor's Nominee), Professor Ian Hickie, Mrs Rosanna Hindmarsh (Vice-Chancellor's Nominee), Mr Andrew Pickering.

#### Highlights:

- In March 2006 the Foundation raised \$70,000 when it undertook its bi-annual Gourmet in the Gardens lunch at the Australian National Botanic Gardens.
- During Mental Health Week in October, the Foundation initiated the Glow to Affirm Campaign, which was officially launched by the ACT Minister for Health, Katy Gallagher at the National Museum of Australia. The Foundation received \$25,000 from the campaign, through the sale of glow in the dark wristbands, sponsorships and donations.
- The opportunity to raise awareness of its cause through associated activities included successful public mental health seminars and wide media coverage.

### Herbert and Valmae Freilich Foundation

Established in 1999 to promote better understanding of causes of bigotry, animosity and intolerance and strategies to combat these evils and promote co-existence.

**Board Members:** Professor Ian Donaldson (Chair), Dr Herbert Freilich, Mrs Valmae Freilich, The Hon Bob Sercombe MP, Professor Iain MacCalman, Professor Simon Bronitt, Dr Benjamin Penny, Ms Renata Grossi.

#### Highlights:

- The second Alice Tay Lecture on Law and Human Rights, delivered by Professor Larissa Behrendt from the University of Technology Sydney. During the emotional debate on the use of customary law in the Australian court system and the alleged abuse of Aboriginal children in many communities, Professor Behrendt addressed the question of Human Rights and Indigenous issues. Her lecture was entitled As Good as it Gets or as Good as it Could be? Benchmarking Human Rights in Australia.

- The Tenth Annual Lecture on Bigotry and Tolerance was given by internationally acclaimed children's author Morris Gleitzman. Morris Gleitzman is the author of *Boy Overboard and Girl Underground* which address the issue of refugees fleeing oppressive regimes to come to Australia in the hope of finding a safe home. His lecture addressed the issue of writing about bigotry for children. It was entitled *Big Hearts, Small Bodies: Why I Write Children's Books*. This lecture was held in conjunction with the National Library of Australia.
- In conjunction with the Centre for Cross Cultural Research the Foundation held a series of four seminars entitled *Islam, Nation, World: Cross Cultural and Geopolitical Perspectives*. The seminars were aimed at providing a better understanding of Islam as a religion and culture. Seminars were delivered by the following people: Dr Adrian Gully from the Arabic and Islamic Studies, The Asia Institute, Melbourne University; Professor William Maley, Director of the Asia-Pacific College of Diplomacy, ANU; Dr Greg Noble from the Centre for Cultural Research, University of Western Sydney; and Professor Amin Saikal, Director of the Centre for Arab and Islamic Studies, ANU.

### School of Music Foundation

Established in 2001 to support the School of Music by providing an invaluable link to the corporate community, through sponsor and patron development.

**Directors:** Emeritus Professor Deane Terrell AO (Chair), Mr Stephen Hardy, Mr Manny Notaras, Mr Chris Peters, Associate Professor John Luxton and Professor Adam Shoemaker.

#### Highlights:

- A relationship with the Shanghai Symphony Orchestra was established, with a view to encouraging exchange performances and short term visiting programs between the two institutions.
- The two scholarships supported by the Dennis Griffin Memorial Fund, a national piano scholarship and a national composition scholarship, were launched.
- The Friends of the School of Music continued their active support of the School through grants and concerts, including a musical evening at Government House hosted by Their Excellencies the Governor General of Australia and Mrs Marlena Jeffery.
- The Foundation Board was expanded to include three new directors. All highly respected community leaders, Mr Stephen Hardy, Mr Manny Noraras and Mr Chris Peters all joined the Board in early 2006.

### Sir Roland Wilson Foundation

Established in 1998 to advance the study and development of public policy and management within Australia and internationally.

**Directors:** Emeritus Professor Deane Terrell AO (Chair), Mr Ian Castles AO, Mr Ted Crook, Dr Ken Henry, Secretary to the Treasury, Ms Lynelle Briggs AO, Public Service Commissioner, Mr George Pooley, Professor Glenn Withers AO, Professor Keith Houghton, Lady (Joyce) Wilson attends by invitation.

## Highlights:

- The Foundation awarded three grants to postgraduate students. The Sir Roland Wilson Scholarship was awarded to Matthew Allen, the Sir Roland Wilson Prize to Mukarram Jah Ansari, and the Sir Roland Wilson Travel Award to Matthew Linley.
- The fourth Sir Roland Wilson lecture was presented by Margaret Jackson, CEO QANTAS entitled Australia's QANTAS: Bold, Brave and Innovative. Special reference to the contribution of Sir Roland Wilson was made throughout the lecture.
- Following the lecture the book *Giblin's Platoon* by William Coleman, Selwyn Cornish and Alf Hagger was launched by Dr Ken Henry.

## The ANU Foundation for the Visual Arts

Established in 2004 to support programs and activities in the visual arts at the University.

**Directors:** Professor David Williams (Chair), Mrs Claudette Chubb, Mr Warwick Williams, Mr Giles Pickford, Mr Henry Ergas, Mr Mick Allworth, Mr Gordon Bull, Ms Nancy Sever.  
Mr Warwick Williams submitted his resignation from the Board in May 2006.

## Highlights:

- A number of exhibitions were opened during the year including:
  - Rebecca Horn *Time Goes By*
  - *Land* by Ian Bettinson
  - David Rankin
  - *Mumeka to Milmilngkan: Innovation in Kurulk Art.*
- Members of the Foundation have been working closely with the Canberra Glassworks in developing collaborative projects to progress the profile of glass art in Canberra.
- The Foundation determined that its top priority would be the development of a single endowed scholarship fund to support students at the ANU School of Art.
- Ms Louise Walsh, Director, Australia Council ArtSupport was guest speaker at a lunch organised in partnership with Canberra Arts marketing in November 2006.

## TILLYARD PRIZE

### One of the oldest undergraduate prizes of the University supported through the Endowment

The Tillyard prize was originally established in 1939, the University Association of Canberra (now Australian Federation of University Women) raised funds for an annual prize for students of the Canberra University College. The prize was awarded to the student who made an outstanding contribution to community life during the year. In 1955 this fund was endowed and from 1956 the medal and prize were known as the Tillyard Prize to commemorate both Robin and Patricia Tillyard.

Dr Robin Tillyard, a naturalist and entomologist, was a member of the Canberra College Council and he made a major contribution to higher education in Canberra. Patricia Tillyard also served on the College Council and was a prominent member of the University Association of Canberra and President of the Women Graduates' Association.

The Tillyard Prize is the oldest and most prestigious prize available to undergraduate degree students of ANU. A special event was organised in December 2006 to unveil an honour board which names all of the recipients of the Tillyard Prize. Many of the winners were able to join us.

### YALE BECKONS TILLYARD PRIZE WINNER



**The recipient of the University's most prestigious award for undergraduates is bound for Yale University on a full PhD scholarship.**

Law and arts graduate Jennifer Wellington received the Tillyard Prize at the morning graduation ceremony on 14 July 2006.

She was chosen for the \$1,000 prize for her contributions to the campus and Canberra communities, which included founding the ANU St Vincent de Paul conference.

"I'm amazed and touched that people would think highly enough of me to nominate me for this" she said.

Ms Wellington, who received first-class honours in history and law, has also been awarded a six-year scholarship to Yale to complete a PhD in history.

*Story from ANU Reporter: Autumn 2006*

## Recipients of the Tillyard Award

Year	Recipient	Year	Recipient
1940	William Richard CARNEY	1980	David EASDOWN
1941	Edgar Neville KRUGER	1981	Vivienne Diane BATH
1942	George Frederick CORDY	1982	Deborah Mary GILLATT
1944	Roy Edward BULLOCK	1983	Charles Richard MARSHALL
1945	Bernard KUSKIE	1984	Wanda Maree HENRY
1947	John Hugh GARRETT	1985	Desmond Robert MANDERSON
1948	Erica Florence CAMPBELL	1986	Lesley Ann WARD
1950	Arthur HIRST	1986	Jane Holley CONNORS
1951	Raymond Joseph PERCIVAL	1988	Robert Thomas BEECH-JONES
1952	John Daniel DONOHUE	1988	Judith Patricia LANDSBERG
1953	Keith Chapman BRADSTOCK	1989	Frank Patrick BRENNAN
1954	John Burton EDWARDS	1990	Natasha CICA
1955	Maris Estelle KING	1990	Michael Burnett STANIER
1957	John Laurence CARROLL	1991	Daniel Vernon BOTSMAN
1958	Alfred William MCCARTHY	1991	Annemarie DEVEREUX
1960	Joan Looke THOMSON	1991	Adrienne Louise FAIRHALL
1961	Colin Patrick MACKERRAS	1992	Carolyn Rae FRY
1961	Beryl Ailsa SEAWRIGHT	1992	Timothy Charles OLDHAM
1962	Jennifer Anne JOHNSON	1992	Fiona-Marie CROWE
1963	Christopher Ian HIGGINS	1993	Jeremy Kevin KIRK
1965	John Henry COATES	1994	Naomi Emma FLUTTER
1965	Elizabeth Anne REID	1994	Pragati JAIN
1966	Graham Richard ALLIBAND	1994	Matthew Randell LOBB
1967	Bruce George DONALD	1995	Andrew Alan DEMPSTER
1968	Desmond John BALL	1996	Matthew Peter DAVEY
1969	Anthony Donald WEIR	1997	Alan Patrick MACKERRAS
1969	Caroline TURNER	1998	Claire Louise BOWERN
1970	Ian George CUNLIFFE	1998	Edward Ritchie Joseph COLE
1971	John Christopher BISHOP	1999	Frank Roland THIRION
1972	Timothy James MOY	1999	Matthew Reid TINNING
1973	Robert Nicholas JOSE	2000	Geraldine Helen CHIN
1974	Ann Margaret PICKERING	2001	Robyn Jennifer BRIESE
1975	Allan Gordon MURRAY-JONES	2001	Mark THOMSON
1975	Huw PRICE	2002	Paul David BARNESLEY
1976	Kevin J HART	2003	Penelope Alice JONES
1976	Hilary R PENFOLD	2004	Janet Helen BULTITUDE
1977	Rosina BRAIDOTTI	2005	Jennifer Margaret WELLINGTON
1979	Mark John DURIE		

## STUDENTS, STAFF & PROJECTS SUPPORTED BY THE ENDOWMENT IN 2006

### SCHOLARSHIPS & PRIZES, 2006

We would like thank our many individual and corporate donors who enable ANU to continue its proud tradition of attracting and supporting bright and gifted students regardless of their economic background. Without donor support we would not be able to provide a range of scholarship support and opportunities.

Following is a list of the Scholarships and Prizes held within the Endowment for Excellence. This list also includes:

- some funds that predate the establishment of the Endowment in 1996
- endowment funds that were established with part funding by the University are marked\*
- donations received on an annual basis
- funds that are still building a preserved corpus where scholarships may not have been awarded because the fund has not yet built to a viable level.

Many of these scholarships are supported in perpetuity through the Endowment for Excellence, others are funded on an annual basis.

### ANU COLLEGE OF ARTS & SOCIAL SCIENCES

ENDOWMENT FUNDS	
Named Fund/Donor	Award Winners
<b>Faculty of Arts</b>	
Allan Martin AHA-ANU Award	Not awarded
Anne Fraser Prize for American Studies	Nicole Salvo
Anthony Forge Prize	Kate Crosbie
The Anthony F. Granucci Scholarship Fund	Inaugural awards to Budianto Hakim, Muhammad Nur, Rustan from Makassar and Jarwo Suysetyo Edy Yuwono from Yogyakarta
ANU Classical Society Prize	Sarah Hoffman
Baudin French Scholarships	Not awarded
Bill Hyslop Prize	Not awarded
Centre for Arab and Islamic Studies PhD Scholarships	Daoud Yaqub
D.A. Casey Prize	Kathryn Elizabeth Rogers
David Campbell Prize	Robert Denish Wood
Dennis Griffin Scholarship Fund	Concert to launch the Scholarship fund was held in April 2006. Award to be made in 2007
Dorothy Olive Cameron Bequest Fund: - Dorothy Cameron Prize - Dorothy Cameron Award	Prize winner: Hsiao-Chung Hung
Embassy of Spain Australian Young Artists' Scholarship	Meg Roberts
Erika Haas Prize for Performance	Edward Neeman
First Year Anthropology Prize	Susannah Russell
George Limb Voice Fund to support an annual Opera Production	Supports biennial opera production

George Zubrzycki Prize	Not awarded
Grahame Johnston Prize for Australian Literature	Cara-Jane Shipp
Harold Allen Memorial Prize	Jonathan Stuart McFeat and Michael Bruce Sollis
Jan Brown Drawing Prize	Not awarded
Janet Wilkie Memorial Award	Gwen Horsfield
John Kirby Memorial Scholarship	Calum Stewart
John Painter/Lois Simpson Prize	Shahn Lee Paterson
Judith Wright Scholarship Fund	Fund is consolidating, award to be made in 2007
Kate Buchdahl Memorial Prize for Violin or Viola	Charlotte Amelia Burbrook de Vere
Kate North Memorial Prize	Antoine Palade
Khalifa Bakhit Al-Falasi Prize for Master of Arts specialising in Middle Eastern and Central Asian Studies	Malcolm McAlister
Kornfeld Graduate Scholarship Fund for Voice	Not awarded
L.F. Crisp Memorial Prizes in Political Science	James Robertson
L.F. Crisp Memorial Prizes in Political Science (Fourth Year Honours)	Sinead Clifford and Kelly Farrow (shared)
L.F. Crisp Memorial Prizes in International Relations (Fourth Year Honours)	Mark Fei-Chun Chou
Lady Isaacs Prize in Australian History	Alessandro Antonello and Graham Burke (shared)
Leonard and Margaret Doman Flute Scholarship*	Not awarded
Margaret Smiles Prize for Accompaniment*	Lara Jane Dodds-Eden and Geoffrey Philip Xeros
Margot Lewin Biennial Prize for Cellists	Patrick Macculloch Suthers
Mick Williams Prize in History	Mary Anne Byrne and Robert Denish Wood (shared)
Peter and Lena Karmel Anniversary Awards: to final year students in visual arts and music*	Tevita Poese Havea and Niels Christian Rosendahl
Peter May Prize	Rebecca Lin Yit
Peter Herbst Essay Prize and Coloquium Fund	Not awarded
Quentin Gibson Prize for Philosophy	Mathew Reece Abbott
Rachel Dorph Memorial Prize	Eugenie Edquist
Reginald de Bray Prize for Linguistics	Clare Tayler-Henry
Richard B. Davis Prize For Anthropology	Corinne Yvette Dobson
Ruth Pfanner Undergraduate Scholarship for Cello*	Patrick Macculloch Suthers
Sir Geoffrey Yeend Honours Scholarship	Tom Chodor, Katharine Edghill
Stephen Proctor Fund for Glass	2006 Fellow Mark Zirpel took up position in September
W.E.H. Stanner Prize	Joanna Mary Gaudry
Westende Travelling Scholarship (ANU School of Art)	Dionisia Salas Hammer and Macushla Catherine Robinson
Winifred Burston Memorial Scholarship for piano performance	Edward Neeman
<b>Research School of Social Sciences</b>	
Minoru Hokari Memorial Scholarship Fund	Inaugural award to Lorina Barker
Postgraduate Scholarships*	Fund consolidating

ANNUALLY FUNDED SCHOLARSHIPS & PRIZES	
Named Fund/Donor	Award Winners
Abel's Music People's Choice Prize	Eloise Fisher, Anna Ransom and Patrick Macculloch Suthers
Alice Moyle Musicology Prize	Not awarded
Alliance Francaise de Canberra Prize	Beginners: Christine Thorpe Intermediate: Belle Joseph Continuing: Stephen Phillips Advanced: Jennifer Edmondson and Caitlin Ellis (shared)
ANU National Orchestral Scholarship	Ewan Foster, Nathaniel Bruce Johnstone, Michael Ian Stevens and Patrick Macculloch Suthers
Australia-Britain Society (ACT) Honours Scholarship	Karen Anne Downing
Basil Bressler Prize for Violin	Not awarded
Brynrefail Classics Awards	Mi'er Chan, Kalina Gilbert and Christopher Ransom
Dante Alighieri Society (Canberra Branch) Prize for Italian	Introductory: Luisa De Liseo Continuing: Bo Qian Wang Intermediate: Jai Sharma Advanced: Cris Corera
Dean's Scholarship for Excellence 2004–2007	Shahn Lee Paterson
E.A. Lyall Memorial Prize	Not awarded
Emerging Artists Support Scheme Patrons Honours Scholarships in Visual Arts	Michal Glikson
Embassy of Spain Australian Young Artists' Scholarship	Meg Roberts
Foster Scholarship in Jazz	Michael Azzopardi
Friends Bernhard Neumann Memorial Prize (formerly Friends of the School of Music Prize)	Harold Gretton
Friends Chamber Music Prize	Awarded to a group conducted by Tim Hansen
Friends of the Library Blackburn Medal in Drama	Rhys Holden
Goethe Society Prizes	First Year: Petra Bright Second Year: Kate Jeuniewic Third Year: Elizabeth Hall Fourth Year: Jennifer Bauer
Henry Ergas Honours Scholarship in Visual Arts	Nicci Haynes, Denise Higgins and Miriam Kelly
Kamberra Prize	Owen Johnson
Leslie Holdsworth Allen Memorial Prize	Suparna Roychoudhury
National Museum of Australia Graduate Diploma Scholarship	Sonja Balaga, Karina West, Rowan Henderson
Nigel and Anne Flowers Undergraduate Honours Scholarship for Flute	Not awarded
Nigel Thompson Travelling Scholarship	Sarah Firth and Robert Guth (shared)
Peter Fay Foundation Awards (Visual Arts)	Kate Smith and Charles Sofo
Presidents of the Motor Trades Association of Australia Prize for Australian Public Policy	Katherine Holloman

Presidents of the Motor Trades Association of Australia Prize for Policy Studies	Shaun Haidon
Ronin Films Prize for Introduction to Film Studies	Paul Heslin
Ronin Films Prize for the Film Studies Major	Aaron Ridgway
Ronin Films Prize for Honours in Film Studies	Andrew Hayllar
Swiss Embassy Prize	German: Jennifer Bauer, Caroline Haywood, Fionnuala Grainne O'Brien, French: Elizabeth Mullan, Elizabeth Hall, Belle Joseph Italian: Daniel Purcell, Jai Sharma and Kaitlin Yuille
<b>Research School of Social Sciences</b>	
Charles Price Prize in Demography	Wilma Perante
Lado Ruzicka Prize in Demography	Eng-Chuan Koh

## ANU COLLEGE OF ASIA & THE PACIFIC

### ENDOWMENT FUNDS

Named Fund/Donor	Award Winners
------------------	---------------

### Faculty of Asian Studies

Ann Bates Undergraduate Prize for Indonesian Studies*	Petra Mahy
ANU Chinese Language Scholarships*	Isabela Burgher and Catherine Taylor
Basham Prize	Sarah Bishop
Klestadt Prize for Japanese	Dilhara Premarante
Richard B. Davis Prize for Thai	David Hunter
Sir Geoffrey Yeend Honours Scholarship	Dilhara Premarante

### Crawford School of Economics & Government

Sir Roland Wilson Travel Award	Matthew Linley
Sir Roland Wilson Scholarships [Supporting National Graduate School of Management Scholarships and Graduate Public Policy Program Scholarships]	Matthew Allen

### Research School of Pacific & Asian Studies

Ann Bates Postgraduate Prize for Indonesian Studies	Marcus Mietzner
Anthony Reid Prize in Southeast Asian Studies	Not awarded
Jennifer Cushman Prize	Award pending
J. Davidson and J. Knight Scholarship	Not awarded
Sir Raymond Firth Scholarship	Warren Mayes

### ANNUALLY FUNDED SCHOLARSHIPS & PRIZES

### Faculty of Asian Studies

Australia Indonesia Association Prize	Tamie Balaga
Australian Federation of University Women - ACT Prize	Penelope Coutas
Naoki Matsumoto Consultancy Prize-Japanese & Political Science	Julia Malecky

## Crawford School of Economics & Government

Elsbeth Young Prize for Social Contribution	Hiroto Yamauchi
Helen Hughes: Master of Economics Prize	Thi Dieu Hang To and Linh Son Nguyen (shared)
Helen Hughes: Graduate Diploma Prize	Milda Irhamni and Duc Anh Dang (shared)
Presidents of the Motor Trades Association of Australia Prize for Policy Consultancy in the Policy and Governance Program	Saryaskus Liu
Presidents of the Motor Trades Association of Australia Bursary for Policy Consultancy in the Policy and Governance Program	Peter Ga'Allah Kora
Raymond Apthorpe Graduate Diploma Prize	Aiza J Garinto
Raymond Apthorpe Master Degree Prize	Amer Latif
Tiri Tiri Master Degree Prize	Joanna Perrens

## ANU COLLEGE OF BUSINESS & ECONOMICS

### ENDOWMENT FUNDS

Named Fund/Donor	Award Winners
A.D. Barton Prize	Sean Lew Kai Chuan
Applied Probability Trust Prize	Han Ming Adrian Wong
G.S.L. Tucker Prize	Not awarded
Goldman Sachs, J.B. Were Prize	Thuy Hanh Le
John Mitchell Scholarship	Samuel John Taylor
Mathews Graduate Diploma Prize in Economics and Public Economic Policy	Hae Kyong Holdaway
Mathews Prize in Public Economics	David Andrew Stephan
Neil Vousden Memorial Scholarship*	Jiadan Jiang
Management Services A.G. Prize in International Business Strategy*	Thomas Peter McCue
Pauline Griffin Prize for Human Resources management in the MBA	Mukarram Jah Ansari
Sir Quo-Wei Lee Scholarships	Not awarded
Sir Roland Wilson Prize	Mukarram Jah Ansari
Terrell MBA Scholarship	Not awarded

### ANNUALLY FUNDED SCHOLARSHIPS & PRIZES

Accenture Prize for Corporate Strategy	Wannie Singal
AMP Prize for an Honours Thesis in Actuarial Studies	Quah Kah Hing
Australian Bureau of Statistics Prize	Jeffrey K C Lai
Australian Finance Conference Prize in Corporate Finance	Grace Angeles and Adam James Franklin
Australian Finance Conference Prizes in Monetary Economics	David Andrew Stephan

Australian Institute of Management Prize for Management	Jonathan Robert Prosser
Australian Prudential Regulation Authority Prize in Business Ethics	Thomas Daniel McEwin
Axiss Scholarship	Ying Lynnette Lin
Chris Higgins Prize	Sylwia Barbara Nowak and Russell Keith Thomson
Commercial Representatives' and Agents' Association Of Australia Prize	Christopher James Woolnough
CPA Australia Prize for Accounting	First Year: Yee Hsing Lee Second Year: David Woolias
CPA Australia Prize for Accounting Major	David Woolias
Department of Finance and Administration Prize for: Master of Financial Management	Qian Shen
Microeconomics 3	David Hyeong-Jin Beven
Public Sector Accounting	Not awarded
Economic Society Prize for Economics II (Honours)	Not awarded
Economic Society Prize for Economics IV (Honours)	Yu Hao Fang and Hugh Rex Green
Ernst & Young Prize for Auditing	Caroline Diana Dubs and David Woolias
Ernst & Young Prize for Accounting Theory	David Woolias
Noel Butlin Prize for Economic History IV (H)	Not awarded
LexisNexis Prize in Company Accounting	Lisa He Qin
PricewaterhouseCoopers Prize for Accounting	Rahul Verma
PricewaterhouseCoopers Prize for First Year Accounting	Eu Liang Tan
Robert Jones Productivity Commission Prize for the Master of Economics	Andrea Schmidt
Statistical Society of Australia (Canberra Branch) Prize	Not awarded
Statistical Society of Australia (Canberra Branch) Prize for First Year Statistics	Micaela Emily Hartley and Yee Hsing Lee
Swiss Re Life and Health Prize for Actuarial Techniques	David Hyeong-Jin Beven
Thomson – ATP Prize in Principles of Taxation Law	Grace Angeles and Ewan Yik Khang Chow
Thomson – ATP Prize in Taxation Concepts and Issues	Yi Heng Yu
Tillinghast – Towers Perrin Prize for Third Year Actuarial Studies	Phillip Bruce Dewhurst and Cheng Cherng Wong
Trowbridge Consulting Prize for Actuarial Control Cycle	Kieran Kai-Kwong Luke

## ANU COLLEGE OF ENGINEERING & COMPUTER SCIENCE

### ENDOWMENT FUNDS

Named Fund/Donor	Award Winners
------------------	---------------

### Faculty of Engineering & Information Technology

ACSys Scholarship Endowment Fund*	Not awarded
Erin Brent Computer Science Prize	Josh Milthorpe

Computer Science Research Project Honours Scholarship	Pete Peerapong Janes
Dickins Engineering Scholarship	Antoine Ansart
Paul Thistlewaite Memorial Scholarship	Sarah Smith
<b>Research School of Information Sciences &amp; Engineering</b>	
CRASys Scholarship and Research Endowment Fund*	Not awarded

#### ANNUALLY FUNDED SCHOLARSHIPS & PRIZES

#### Faculty of Engineering & Information Technology

ANU Enterprise Engineering Scholarship	Haibo Chen, Jason Schiemer, and Bathiya Senanayake
ANU Enterprise Engineering Scholarship for Women known as the Lisa Brodribb Women in Engineering Scholarship	Adele Scott
ANU – National ICT Australia Honours Scholarship	Huei Ee
Australian Computer Society (Canberra Branch) Prize	Soo Ling Lim
Defence Signals Directorate Engineering Scholarship	Michael De Hoog
ANU College of Engineering and Computer Science – Dean’s Prize	Ju Ong, Matthew Combe, Katie McLean, Josh Milthorpe, Soo Lim and Eleanor Donovan
CSIRO ICT Hons Scholarship	Thuan Seah Tan, Khoi-Nguyen Dao Tran and Qi Zhang
H.A. Jones Medal for Excellence in Engineering	Ju Lynn Ong
RuleBurst Prize in Computer Studies	Neil Hathaway

#### ANU COLLEGE OF LAW

ENDOWMENT FUNDS	
Named Fund/Donor	Award Winners
ACT Director of Public Prosecutions Prize	Jesse Kennedy
Ann Downer Memorial Prize	Bede Gahan and Joanne Wright
Bailey Prize for Human Rights	Scott Stephenson
Baker and MacKenzie Prize in Intellectual Property	Owen Thomas
Blackburn Medal for Research in Law	Patrick Delaney
Daphne Olive Memorial Prize in Legal Theory	Celia Winnett
George Knowles Memorial Prize	Celia Winnett
Jack Richardson Prize for Administrative Law	John Altin
Littleton Groom Memorial Scholarship	David Coker
Maree Ayers Prize in Criminal Justice	Not awarded
Phillipa Weeks Memorial Scholarship	Fund Building

ANNUALLY FUNDED SCHOLARSHIPS AND PRIZES	
ACT Baha'i Community Prize in International Law	Celia Winnett
ACT Bar Association Prize for Evidence	James Hutton
Allens Arthur Robinson International Trade Law Prize	Anna Gordon
AMPLA Prize for Resources Law	Not awarded
Australian and New Zealand Association of Psychiatry, Psychology and Law Prize	Jennifer Hurrell
Australian Network for Japanese Law (ANJEL) Akira Kawamura Prize for Japanese Law and Society	Christopher Stevens
B C Meagher Prize for Commonwealth Constitutional Law	Elizabeth Southwood
Blake Dawson Waldron Prize for Corporations Law	Caroline Dubs
Centre for Commercial Law Prize for Takeovers and Securities Industry Law	William Bateman
Clayton Utz Prize in Torts	Malissa Ahlefeldt, Sarah Lynch, Nicholas Swan
Clayton Utz Prize in Administration Law	Elizabeth Southwood
Commercial Representatives' and Agents' Association of Australia Prize	Christopher James Woolnough
Commonwealth Attorney-General's Department Prize	Correa McKenzie
The Dean's Prize for Law	Alexander Tilemann, Anton Wasson, Benjamin Jacobs, Charles Beasley, Kristy Domitrovic, Meredith Tasker, Nicholas Kelly, Richard Allende and Samuel Windley
The Dean's Prize for Jessup Moot	Patrick Delaney, Rebecca Jenkin, Benjamin May and Heidi Yates
Elizabeth Allen Prize for Foundations of Australia Law	Pauline Thai
Farrar Gesini & Dunn Prize	Peter Crisp
Freehills Prize for Commercial Law	Mathew Baldwin
Harmers Prize for Work and Law	Correa McKenzie
Holding Redlich Prize for Labour Law	Michael McIver
Holding Redlich Prize for Property	Amanda Angus and Jason Strachan
John James Memorial Hospital Prize in Health Law	Danielle Noble
Law Society of the Australian Capital Territory Prize for Contracts	Willem Bouwer
LexisNexis Prizes in Law	Andrew Sainsbury, Catherine Thomson, Elinor James, Emma Saint, Joanna Virtue, Lauren Henschke, Melanie Mulquiney and Vijay Murik
Lexmark Prize for Environmental Law	Emma Dear
Liz and Bill Allen Prize for Practical Legal Training	Session 1/05: Kim Kilby Session 2/05: Magdalena Iwasiw
Mallesons Stephen Jaques Prize for Law Studies	Aparna Rao
Minter Ellison Prize	Jennifer Robinson
Professional Careers Australia Prize for Lawyers, Justice and Ethics	Natalie Lilford and Pauline Thai (shared)
RuleBurst Prize in Information Technology Law	Stephen Tang

RuleBurstPrize in Legal Systems	Wade Johanson
Senatore Brennan Rashid D.F.K. Prize for Bankruptcy and Insolvency	Ciala Myers
Sir Victor Windeyer Prize in Legal History	Hilary Jones
Sparke Helmore Prize for Equity and Trusts	Alison Gurr
Stacks the Law Firm Prize for Income Tax	Erin Kite
Supreme Court Judges Prize	James Hutton
Thomas Richards Prize for Administrative Law	Not awarded
Thomson Prizes for Law	Hermione Blackman, Elizabeth Price, Alexander Kunzelmann, Danielle Noble, Olivia Tucker, James Kendal, Francis Beens, Rebecca Campbell, Karina Harvey and Simon Thornton
Thomson Prize for Restrictive Trade Practices	Simon Thornton
United Nations High Commissioner for Refugees (UNHCR) Prize for International Law and Human Rights	Julia Malecky

## ANU COLLEGE OF SCIENCE

ENDOWMENT FUNDS	
Named Fund/Donor	Award Winners
<b>Faculty of Science</b>	
ACTION Trust Scholarship*	Paul Bonato, Hannah Hueneke, Simeon Hui, Heather Mason and Robyn Sakkara
AN Hambly Prize	Natalie Spillman
Anjeli Nathan Scholarship*	Not awarded
Anthony Seelaf Memorial Prize in Geology	Not awarded
Botany Prize	Catherine Hayes and Joanna Carpenter
David Brown Travel Scholarship	Not awarded
Hanna Neumann Prizes for Mathematics	Group C units: Sarah Bolt Mathematics IV(H) Rishni Ratnam and Tristan Bice (shared)
Howlett Honours Prize for Geography	Janet Finn
Irene Crespini Prize for Palaeontology	Not awarded
Janet Elspeth Crawford Prize	Tracy Slatyer and Anastasia Dalziell
K.S.W. Campbell Award in Earth Science	Dr Andrew Christy
L.D. Pryor Prize	Lucy Aplin
M.R. Jacobs Prize in Silviculture	Melinda Mylek
Priscilla Fairfield Bok Prize	Sarah Bolt and Ruth Mills (shared)
Schlich Memorial Prize in Forestry	Melinda Mylek
W.P. Packard Prize in Geography	Mark Grant
Wanda Henry Prize for Optical Communications	Sheon Shang Yaw Chua

<b>Research School of Astronomy &amp; Astrophysics</b>	
Alex Rodgers Travel Scholarship for a PhD student in Astronomy*	Mary Williams
Bok Honours Scholarship*	Simon Murphy
Joan Duffield Postgraduate Scholarship Fund	Karen Lewis and Emmas Kirby (shared)
Olin Eggen Travel Scholarship*	Not awarded
<b>Research School of Earth Sciences</b>	
John Conrad Jaeger Scholarship*	Award pending
<b>Research School of Physical Sciences &amp; Engineering</b>	
Oliphant Endowment Scholarship	Fund building
R & H Crompton Travelling Scholarship	Joanne Harrison (Atomic and Molecular Physics Laboratories)
Steven Morrison (Nonlinear Physics Centre)	Award pending
Jagadishwar Mahanty Prize	Award pending
<b>Mathematical Sciences Institute</b>	
Bernhard Neumann Memorial Scholarship	Fund consolidating
Hilary Booth Scholarship	Fund consolidating
Mathematical Sciences Institute Honours Scholarships*	Fund consolidating
P.A.P. Moran Prize for PhD Thesis in field probability/statistics	Fund consolidating
Peter William Stroud Prize	Fund consolidating

## **ANNUALLY FUNDED SCHOLARSHIPS & PRIZES**

<b>Faculty of Science</b>	
Adrien Albert Honours Chemistry Prize	Jennifer Hodgson, Simone Ward (shared)
Angus Nicholson Scholarship	Niraj Narsey Lal
ANU Enterprise Chemistry Scholarship	Di Lu and Yik Chun Wong
Australian Institute of Agricultural Science and Technology Prize	Elizabeth McMillan
Australian Institute of Physics Prize	Paul Altin
Australian Psychological Society Prize	Emma Thomas
Australian Psychological Society Prize for Second Year Psychology	Catherine Jones
Australian Society for Microbiology Prize	Sankar Aditya Manchella
Australian Society for Parasitology Prize	Rebecca Hillman
Australian Society of Exploration Geophysicists (ACT Branch) Prize for Geophysics	Not awarded
Curly Humphreys Scholarships for Forestry	Not awarded
Environment Institute of Australia and New Zealand Prize	Elizabeth McMillan
Field Naturalists Association of Canberra Prize	Jessica Bolton
Geological Society of Australia Prize	Ashley C. Kay

Honours Psychology Thesis Prize	Cari Goodwin, John Gosling, Emma Thomas, Christopher Hatherly, Andrew Crocker and Anita Black
I.G. Ross Scholarship	Xiao Chew
Institute of Wood Science Prize	Geoffrey Kay
Jacobs Medal for Outstanding Field Studies in Forestry	Not awarded
Judith A. Slee Prize for Scientific Writing in Psychology	Cameron Sudgen
K.H. Lim Scholarship	Boon Fui Lee
Mavis Prater Prize For Women In Mathematics	Rose Ahlefeldt
May-Jean Chen Prize for Scientific Writing in Psychology	Rebekah White and Hugh Webb (shared)
Michael I. Cook Prize for Scientific Writing in Psychology	Erin O'Reilly
Psychology Prize for First Year	Erin O'Reilly
Psychology Prize for Third Year	Rebekah White
Royal Australian Chemical Institute Prize	Jacqueline Poldy
State Forest Of NSW Prize For Forest Mensuration	Not awarded
W.B. Clarke Prize In Geology	Scott Biddlecombe

## Research School of Earth Sciences

A.L. Hales Honours Scholarship	Not awarded
--------------------------------	-------------

## Mathematical Sciences Institute

Computational Science Honours Scholarship	Lee David Clarke, Tor Lattimore, Lewis J. Ryan, Louisa Ann Meeuwssen, David Noack, Gareth Oliver, Alexander Osborne, Christopher Matthew Pelling and James Robert Thomson
MSI Research Students Fund (est. 2000)	Not awarded
Boyapati Awards First Year	Ramana Kumar, James Thomson, David Noack, Alexander Davies, Karen Deane, Tor Lattimore, Justin Yap, Terrance Sak and Geoffrey Stacey
Boyapati Awards Second Year	Daniel Nadasi, Reuben Fletcher-Costin and Joseph Guillaume
Boyapati Awards Third Year	Robert Saye, Joseph Neeman, Jan Vaughan and Matt Collins
Boyapati Computer Science and Mathematics Honours Scholarship Fourth Year	Robert Saye

## ANU COLLEGE OF MEDICINE & HEALTH SCIENCES

### ENDOWMENT FUNDS

Named Funds/Donor	Award Winners
-------------------	---------------

### The John Curtin School of Medical Research

Alan and Elizabeth Finkel Prize	Award pending
Alexander McTaggart Memorial Scholarship*	Award pending
Biotron Founders Fund	Fund is consolidating

James Rice Memorial Fund for Research into Multiple Sclerosis*	Katrina Svahn
Joyce Fildes Honours Scholarship*	Natalia Botelho
Paul Bunyan Memorial Scholarship*	Award pending
Professor Peter Doherty Scholarship*	Award pending
<b>ANU Medical School</b>	
Keith Family Research Scholarship in Clinical Haematology	Fund building
Reginald Kitchin Scholarship	Award pending
Gareth Long Memorial Scholarship	Fund building
<b>National Centre for Epidemiology &amp; Population Health</b>	
Baume Scholarship Fund*	Award pending
Duguid Aboriginal Travel Scholarship	Award pending
Leonard Broom Scholarship	Award pending
<b>Centre for Mental Health Research</b>	
Hollie Jackes Memorial Scholarship	Award pending

#### ANNUALLY FUNDED SCHOLARSHIPS AND PRIZES

##### The John Curtin School of Medical Research

Medical Science Fourth Year Honours Scholarship	Wing Cheung Billy Kong and Eu Jern Tan
---	--

##### ANU Medical School

ANU Medical School ACT Medical Board Personal and Professional Development Prize Year 2	Louise Ragg
ANU Medical School Anatomy Dissection Prize	Beth Le Brooy, Jeff Van Gangelen, Robert Gordon and Ben Piper
ANU Medical School Year 2 Pathology Prize	Maurice Le Guen
ANU Medical School Medical Women's Society of ACT and Region Women's and Children's Health Essay First Year Prize	Julia Parmeter
ANU Medical School Royal Australian and New Zealand College of Obstetricians and Gynaecologists Women's Health Prize	Amy Swanson

#### UNIVERSITY WIDE

##### ENDOWMENT FUNDS

Named Fund/Donor	Award Winners
Accommodation Bursaries*	11 Undergraduate bursaries awarded 9 Emergency bursaries awarded 8 Postgraduate bursaries awarded 2 Disability bursaries awarded

ANU Alumni Honours Scholarships	This fund supported 6 scholarships in conjunction with Country Education, three scholarships with St Vincent de Paul Society, Regional Access scholarships programs: awarded to Carleigh Dallen, and Kyle Turner
ANU Book Awards	Not awarded
ANU Cricket Club Regional Scholarship Cricket Club	Not awarded
ANU Regional Access Scholarships	Fund used to support the St Vincent de Paul scholarship program and the Country Education program
Canberra Prize to fund ACT Year 12 Student	Not awarded
J.G. Crawford Prize Fund	Not awarded
The Gwendolyn and Kathleen Woodroffe Postgraduate Scholarships, Humanities and Science*	Christina Spry, Robert Stagg and Travis Cutler
Tillyard Prize	Jennifer Margaret Wellington
Bruce Hall Bursaries*	5 Full year bursaries awarded
Rotary Club of Belconnen Bursaries (Bruce Hall)*	1 Bursary awarded
Burgmann College Endowment Bursaries*	10 Scholarships awarded 5 Bursaries awarded
Burton and Garran Halls Bursaries*	Bursaries were awarded over the two semesters
Bobbie Fenner Scholarships, PhB*	2 Bursaries awarded
Frank Fenner Scholarship and Bursaries (Fenner Hall)*	3 Bursaries awarded in first semester
Pauline Griffin Bursaries and Academic Support Program (Fenner Hall)*	3 Bursaries awarded in first semester
<b>Jabal Indigenous Higher Education Centre</b>	
Canberra East Rotary – Alf Gillespie Scholarship*	Kyle Benjamin Turner and Shannon Sutton
Elsbeth Young Memorial Grants	7 Awards made
Joseph and Lindsay Croft Scholarship*	Nicole Ella and Karliea Decker
Nugget Coombs Scholarships in Indigenous Studies*	Not awarded
St Vincent de Paul – ANU Alumni Indigenous Scholarship	Kyle Turner and Carleigh Dallen
<b>Quality Enhancement &amp; Statistical Services</b>	
Ken Wanganeen Scholarship (Australian National Internship Program)	Not awarded

#### ANNUALLY FUNDED SCHOLARSHIPS & PRIZES

ANU Enterprise Access Scholarship	Philip Rademaker and Hasseebullah Khojah
Centre for Science and Engineering of Materials Prize	Rosemary Barnes and Katy A Green
<b>Quality Enhancement &amp; Statistical Services</b>	
Presidents of the Motor Trades Association of Australia Bursary for Internship Reporting in the Australian National Internship Program	Jennifer Robinson
Presidents of the Motor Trades Association of Australia Prize in the Australian National Internship Program	Cherie Canning

## RECENT ANU GRADUATE VIJAY BOYAPATI SUPPORTS MATHS & COMPUTER SCIENCE STUDENTS AT ANU



Now one of its high-achieving graduates, Vijay was also one of the University's best students during his period of study. Vijay thrived on a mix of mathematics and computer science subjects, winning a University Medal when he graduated with honours in 2000. He then went to the US to continue his research on machine learning as part of a new tech company, which soon folded. Never one to dwell on misfortune, Vijay next took a job with a modestly successful search company on the cusp of the big time. Since joining Google, he hasn't looked back.

It's this good fortune that has inspired him to give something back to the University. Vijay has committed to donating \$30,000 over the next three years to create a suite of scholarships for mathematics and computer science students.

"I think donating is a wonderful way for alumni to support their alma mater and aid academic causes they're passionate about.

"I now want to encourage students to study both computer science and mathematics. Mathematics is the foundation of computer science and a solid understanding of the field is important for students if they want to be innovators and not just practitioners.

"I also want to provide a small incentive for women to pursue computer science (some of the prizes are set aside for female candidates). Women are just as bright as men and capable of the same success in computer science, but many have been discouraged from studying the field because of a number of latent barriers."

ANU Endowment for Excellence Chairman Ian Grigg says such support for the University will become increasingly vital in the future.

"We're very grateful to Vijay and all of our supporters. Universities in Australia face funding pressures. It's important that we seek out whatever help we can from endowments, donations, or sponsorships.

Mr Grigg, says it's important for people to get involved with alumni networks in Australia and overseas, as this can be the first step towards becoming more involved with the University community.

"If you have special skills that can be of value, make contact and see if they can be used by the University. ANU has got a great resource of very successful graduates in the corporate world, in the higher echelons of government, in academia, and in almost any endeavour you could care to think of.

"The University's activities and purpose extend beyond the campus. We were established in 1946 to advance Australia's standing. We've been doing that, and our graduates have been doing that. In order for this output to continue, it's important that the University receive input too, in a financial sense, but also input of the skills and time of our graduates.

Extracts from *ANU Reporter*: Winter 2006

## ENDOWMENT FUNDS SUPPORTING RENEWAL & RESEARCH

The following table shows the activity that has taken place from funds that have either been brought into the Endowment for Excellence when it began in 1996 or have been established since. Donations marked \* have been partly funded by the University.

### ANU COLLEGE OF ARTS & SOCIAL SCIENCES

ENDOWMENT FUNDS	
Named Fund	Events/Activity in 2006
<b>FACULTY OF ARTS</b>	
Allan Martin Public Lectures in History	Lecture by Dr John Hurst in May 2006 entitled Labor's Part in Australian History: A Lament.
Al-Ghandi Lecture on Islamic Civilisation*	No expenditure in 2006
Drama appointment	Fund continues to build
Drama Fund*	Support for productions of <i>Antony and Cleopatra</i> by William Shakespeare, <i>Three Tall Women</i> by Edward Albee and <i>The Wind in the Willows</i> by Alan Bennett
Friends of the School of Music Project Fund	Fund building – Travelling Fellowship awarded to Gary France for 2007
Seymour Lecture in Biography	Lecture presented by Dr Lawrence Goldman, Editor of OUP, Oxford and Visiting Fellow HRC. Lecture entitled R.H. Tawney: Using and Misusing a Biography.
Sir William Dobell Chair of Art History*	Professor Sasha Grishin appointed in October 2006
Stanley Melbourne Bruce Fund	Fund consolidating
The Al-Maktoum Chair in Arabic and Islamic Studies*	Dr Matthew Gray continues to occupy the position
The Lectureship in Persian Language and Iranian Studies*	This was filled on a temporary basis for the first part of 2006
The Lectureship in Turkish Language and Culture*	Dr M. Mehdi Ilhan continues to occupy the Associate Lecturer position
<b>Research School of Social Sciences</b>	
ACSPRI Centre for Social Research	Continuing support for positions
Australian Dictionary of Biography*	Support for the Australian Dictionary of Biography on-line initiative continued in 2006
F.H. Gruen Distinguished Fellowships	Support for the Distinguished Fellow appointments continued in 2006
Journal of Political Philosophy Publication Fund*	Support of the Active Program continued in 2006
Private Law Research Fund*	Visiting Appointments in the Law and Philosophy Program
Professorial Chair for Gambling Research*	Professor Jan McMillan continues to occupy the professorial position
RSSS Social Sciences Fellowship*	Support for the Fellowship continued in 2006
Visiting Fellows Research Fund*	Support for Visiting Fellows to the School continued in 2006

<b>Centre for Aboriginal Economic Policy Research (CAEPR)</b>	
CAEPR Indigenous Visiting Fellowship Scheme*	Continued support for the Visiting Fellowship program
<b>Centre for Cross-Cultural Research</b>	
Anthony Forge Fund to support anthropology studies*	The Anthony Forge Memorial Lecture 2006: Sir David Attenborough A God from Easter Island

## ANU COLLEGE OF ASIA & THE PACIFIC

ENDOWMENT FUNDS	
Named Fund	Events/Activity in 2006
<b>Faculty of Asian Studies</b>	
Chair in Korean Studies*	Professor Ken Wells continues to occupy this position
<b>Research School of Pacific and Asian Studies</b>	
Grimshaw Fund to acquire works of art	Purchased artwork for RSPAS in 2006
Jennifer Cushman Memorial Fund*	Continued support for the Visiting Fellows program
John Grenfell Crawford Chair in Agricultural Economics	Professor Peter Warr continues to occupy the position
Morrison Oration Lecture Fund to improve cultural relations between China and Australia	Held bi-annually
Rajiv Gandhi Chair in South Asian Economics*	Professor Ragbendra Jha continues to occupy the position
Transformation of Communist Systems Project *	Continuing support for research, fieldwork and workshops
<b>Crawford School of Economics and Government</b>	
Australia-Japan Research Centre Endowment Fund	Research and conferences continue to be priority activities
Japan Foundation Award	No expenditure in 2006
Pacific Area Forum on Trade & Development (PAFTAD)*	Research networking continued throughout the Asia-Pacific region in 2006

## ANU COLLEGE OF BUSINESS & ECONOMICS

Named Fund	Events/Activity in 2006
Faculty of Economics and Commerce Endowment Fund *	Support for four significant positions in three disciplines: Professor Shirley Gregor, Chair in Information Systems; Senior Lecturer David Service, Actuarial Studies; Professor Heather Anderson, Econometrics; and Professor Farshid Vahid, Econometrics

## ANU COLLEGE OF SCIENCE

Named Fund	Events/Activity in 2006
<b>Faculty of Science</b>	
Anjeli Nathan Fund	Consolidation of funds
Oxford Molecular Research Support Endowment Fund*	No expenditure in 2006

The Jack Westoby Lecture & Fellowships*	Bi-annual lecture. Next will be held in April 2007
<b>Research School of Astronomy and Astrophysics</b>	
Duffield Chair in Astronomy*	Professor Ken Freeman continues to occupy this position
Mt Stromlo Redevelopment fund	Fund consolidating
<b>Research School of Earth Sciences</b>	
Mervyn and Katalin Paterson Fund*	Support for research and attendance at international conferences
<b>Centre for Resources and Environmental Research</b>	
Peter Harrison Memorial Fund	Fund is building
<b>Mathematical Sciences Institute</b>	
R & J Gani Workshops in Applied Probability*	Support for continued research and study programs
Statistical Science Research Visitors and Research Students Fund*	Support for two visitors

## ANU COLLEGE OF MEDICINE & HEALTH SCIENCES

Named Fund	Events/Activity in 2006
<b>The John Curtin School of Medical Research</b>	
Frank and Bobbie Fenner Conference Fund	Fund continues to support research and lectures
Ruth Gani Travelling Fellowship *	Elissa Sutcliffe
<b>National Centre for Epidemiology and Population Health</b>	
John Caldwell Chair in Population Health and Development*	Professor Terence Hull continues to occupy the position

## UNIVERSITY WIDE

Named Fund	Events/Activity in 2006
Ditchley Foundation Conferences*	No expenditure in 2006
Edith and Joy London Fund	Kiola celebrated its 31st Anniversary with an Open Day in March 2006. This celebration concluded a major renovation project and was attended by over 100 people.
Financial Support for Needy Students	Fund consolidating in 2006
Hilda John Bequest Fund	Fund consolidating
Noel Butlin Archives Centre Endowment Fund*	Continued support for the centre
Official Presentations Fund for the acquisition of official gifts	No expenditure in 2006
Staff Amenities Fund	Support included the purchase of sporting uniforms, outdoor furniture including umbrellas and a heater, art purchase, and the support of the Children's Christmas Party and the four Child Care centres.
Vice-Chancellor's Welfare Fund for staff and student welfare	Fund consolidating in 2006
General Staff Development Fund*	Continued to provide financial support for staff members across the University to pursue professional development activities
Hector Kinloch Foundation Fund	Fund consolidating

# APPENDIX A

## HISTORY & OVERVIEW OF ENDOWMENT

Council established the Endowment for Excellence on 1 August 1996 to mark the Fiftieth Anniversary of the University.

The Endowment provides the opportunity for alumni, staff, benefactors and the wider community to support the University's aspirations in a variety of material and on-going ways. It now includes funds whose capital is preserved with interest earnings available for worthwhile activities, and also annually supported awards.

Donations previously donated to the University over its first 50 years (some \$12.75 million) were initially consolidated to form the basis of the Endowment. Considerably more has been added during its life to date.

Funds in the Endowment include the following categories:

1. Scholarships and prizes at both undergraduate and postgraduate levels.
2. The ANU Excellence and Renewal Program which supports the highest standards of scholarship and teaching, including named professorial chairs, seminars, art and equipment acquisition, the recruitment and retention of outstanding staff and research programs.
3. Named foundations which support defined disciplines or activities.
4. Inter-institutional relationships, which provides for activities of mutual benefit with other institutions.

The Endowment also allows donors to support activities on the basis of annual or periodic donations, or to make a donation for a specific purpose to be drawn upon until the gift is exhausted.

The University also has an active bequest program, enabling friends of the University to leave an enduring legacy which supports future generations of scholars and staff.

The Endowment was established by statute of the University, The Australian National University Endowment for Excellence Statute. Under this Statute, The Australian National University Endowment for Excellence Rules provide more detailed guidance on governance and operations. The Statute and Rules of the Endowment ensure that the wishes of donors are respected.

## APPENDIX B

### MEMBERS OF THE ENDOWMENT FOR EXCELLENCE

The following donors have endowed their gift to ANU. The Rules of the Endowment define the conditions and classes of Membership.

<b>CHANCELLOR'S SPECIAL MEMBERSHIP</b>	
Contributions and support in excess of \$2 million	
<b>Donor</b>	<b>Purpose</b>
Estate of the late Ethol Tory	Drama and Scholarships in Linguistics
Estate of the late Gwendolyn Beryl John	Research in water, salinity and environmental issues
Estate of the late Professor Stephen Wurm and the late Dr Helen Wurm	Scholarships and field research in Pacific linguistics
Estate of the late Orde Poynton	Cambridge Australia Trust

<b>PERPETUAL MEMBERSHIP</b>	
Contributions and support of \$250,000 and up to \$2 million	
<b>Donor</b>	<b>Purpose</b>
ACT Government	Chair In Gambling Research, Research School of Social Sciences
The Al-Maktoum Foundation, United Arab Emirates	The Al-Maktoum Foundation Endowment in Arab and Islamic Studies, Centre for Arab and Islamic Studies: Chair in Islamic Studies and Scholarships.
Australian Consortium for Social and Political Research (ACSPRI)	ACSPRI Centre for Social Research
Burgmann College	Burgmann College Bursaries
Burton Estate	Burton and Garran Halls Bursaries
Mr Jackie Chan	The Jackie Chan Science Centre, The John Curtin School of Medical Research
Ms Joan Duffield	Duffield Chair and Scholarships at the Research School of Astronomy and Astrophysics, Mt Stromlo Redevelopment Fund
Emeritus Professor Frank Fenner AC	Frank and Bobbie Fenner Fund, The John Curtin School of Medical Research
Dr Alan Finkel AM and Dr Elizabeth Finkel	The Alan and Elizabeth Finkel Prize, The John Curtin School of Medical Research and to the Finkel Lecture Theatre
Dr Herbert Freilich AM and Mrs Valmae Freilich	Herbert and Valmae Freilich Foundation, Humanities Research Centre
The Government of Turkey	The Lectureship in Turkish Language and Culture, ANU College of Arts and Social Sciences

The Government of the Islamic Republic of Iran	The Lectureship in Persian Language and Iranian Studies, Centre for Arab and Islamic Studies, ANU College of Arts and Social Sciences
Estate of the late Dennis Griffin	Dennis Griffin Memorial Scholarship Fund
Korea Foundation	Chair in Korean Studies, Faculty of Asian Studies and Research School of Pacific and Asian Studies
Professor D Patrick Moore	Cambridge Australia Trust
National Health Sciences Centre	Professor Peter Doherty Scholarships, The John Curtin School of Medical Research
Rio Tinto Services Limited	Rio Tinto-ANU China Partnership Endowment Fund
Professor Deane Terrell AO and Jenny Terrell	Terrell Scholarship Fund, including support for the Leonard and Margaret Doman Flute Scholarship and the George Limb Voice Fund in the ANU School of Music, and MBA Scholarships in the National Graduate School of Management
Lady Joyce Wilson	Sir Roland Wilson Foundation
Dr Gwen Woodroofe	The Gwendolyn Woodroofe Postgraduate Scholarship in the Sciences and The Kathleen Woodroofe Postgraduate Scholarship in Humanities or Social Sciences
Estate of the Late Elspeth Young	Support for Indigenous students

## LIFE MEMBERSHIP

### Contributions and Donations of \$75,000 up to \$250,000

Donor	Purpose
Mr David C. Allen	Cambridge Australia Trust
Anonymous	ANU Chinese Language Scholarships, Faculty of Asian Studies
Emeritus Professor John Bennett	Cambridge Australia Trust
Professor Robert Crompton AM and Mrs Helen Crompton	Robert and Helen Crompton Scholarship for Travel, RSPHySE
Estate of the late Ruth Davidson	Jim Davidson Scholarship, Research School of Pacific and Asian Studies
Dr Joyce Fildes OAM	Joyce Fildes Honours Scholarship, The John Curtin School of Medical Research
The Estate of the late Anthony F Granucci	The Anthony F. Granucci Fund, Research School of Social Sciences
Dr David Gruen	F H Gruen Chair in Economics, Research School of Social Sciences
Mr Nicholas Gruen	F H Gruen Chair in Economics, Research School of Social Sciences
Professor Peter Karmel, AC, CBE and Mrs Lena Karmel	Peter and Lena Karmel Anniversary Awards: to final year students in visual arts and music, Institute for the Arts, ANU School of Music
Reverend Professor Hans Mol and Mrs Ruth Mol	The Hans Mol Endowment Fund

Professor Mervyn Paterson and Mrs Katalin Paterson	To provide assistance and support to Australian and international students – Research School of Earth Sciences
Dr Ruth Pfanner	The Ruth Pfanner Undergraduate Scholarship for Cello, School of Music
Emerita Professor Beryl Rawson	Allan Martin Lectures in History, Research School of Social Sciences and ANU-AHA Allan Martin Award, Faculty of Arts
Rio Tinto Aboriginal Foundation, Rio Tinto Ltd.	Indigenous Visiting Fellowship, Centre for Aboriginal Economic Policy
Mrs Ruth Rodgers (1998-2003)	Alex Rodgers Travelling Scholarships: for a PhD student in Astronomy, Research School of Astronomy and Astrophysics
Professor Brian Schmidt	Mt Stromlo Redevelopment Fund, Research School of Astronomy and Astrophysics
Mrs Caroline Simpson, AM (dec)	Australian Dictionary of Biography, Research School of Social Sciences
Professor Peter Treacy and Dr Barbara Treacy	Sir Mark Oliphant Scholarship Fund, Cambridge Australia Trust
Westpac Foundation	Indigenous Visiting Fellowship, Centre for Aboriginal Economic Policy

<b>DISTINGUISHED MEMBERSHIP</b>	
<b>Contributions and Donations of \$25,000 up to \$75,000</b>	
<b>Donor</b>	<b>Purpose</b>
The ACTION Trust	ACTION Trust Scholarships: Honours scholarship within resource management and environmental science, Centre for Resource and Environmental Studies
Emeritus Professor Gordon Ada	The John Curtin School of Medical Research
Mr Al-Ghandi	Al-Ghandi Lecture on Islamic Civilisation, Centre for Arab and Islamic Studies
Mrs Joyce Ambruster	Bok Honours Scholarship, Research School of Astronomy and Astrophysics
ANZ Bank	Rajiv Gandhi Chair, Research School of Pacific and Asian Studies
Association of Lions Club	ANU College of Medicine and Health Sciences
The Hon. Emeritus Professor Peter Baume and Mrs Jenny Baume	The Baume Fund, ANU College of Medicine and Health Sciences
Mr John Bok and Mrs Joan Bok	Bok Honours Scholarship, Research School of Astronomy and Astrophysics
Bruce Hall	Bruce Hall Bursaries
Mr and Mrs Phil Bunyan	Paul Bunyan Memorial Scholarship, The John Curtin School of Medical Research
Co-operative Research Centre for Adaptive and Robust Systems	Scholarship Fund for Students in the Research School of Information Sciences Engineering

Glen and Elise Eggen	Olin J Eggen Scholarship, Research School of Astronomy and Astrophysics
Ms Christine Foley	ANU School of Music and the Friends of the School of Music Project Fund
Professor J. Gani AM	Ruth Gani Travelling Fellowship, The John Curtin School of Medical Research R & J Gani Workshops in Applied Probability, School of Mathematical Sciences
Ms Pauline Griffin AM	Pauline Griffin Bursaries and Academic Support Program, Fenner Hall and Prize for Human Resources Management in the MBA and the Visual Arts Foundation
Mr Ian Hancock	Phillipa Weeks Memorial fund, ANU College of Law
Professor Peter Herbst (dec)	Peter Herbst Essay Prize and the Herbst Colloquium for Honours students in Philosophy within the Humanities Research Centre
Ms Beryl John (dec)	Hilda John Bequest Fund
Mr John Milne	Dewarmilne Prize in Immunology, Annual Appeals
Mr John Mitchell	John Mitchell Scholarship, ANU College of Business and Economics
Mr Viz Nathan (dec) and Mrs Elizabeth Nathan	Anjeli Nathan Scholarship, Faculty of Science
National Mutual International	Rajiv Gandhi Chair, Research School of Pacific and Asian Studies
Mr Giles Pickford	Visual Arts Foundation
P&O Australia	Rajiv Gandhi Chair, Research School of Pacific and Asian Studies
Rotary Club of Canberra East	Rotary-Alf Gillespie Scholarship
Rotary Club of Belconnen	Rotary Club of Belconnen Bursaries, Bruce Hall
Tyne Reid Trust No. 1	Noel Butlin Archives Centre
Zimmer Pty Ltd	Gareth Long Memorial Scholarship, ANU College of Medicine and Health Sciences

## HONORARY MEMBERSHIP

Membership is at Council discretion on the advice of the Board.

Donations of \$7,000 up to \$24,999

Donor	Purpose
Mr David Allen	Cambridge Australia Trust
Amalgamated Manufacturing Workers Union	Noel Butlin Archives Centre
Mr Kulendran Anaimugan	ANU Alumni Honours Scholarship Program
Anonymous - various	Mt Stromlo Redevelopment Fund
ANU Union	Joseph and Lindsay Croft Memorial Scholarship Fund
Mr Arun Abey	Regional Access Scholarships
Emeritus Professor Allan Barton	Allan Barton Prize
Professor Peter Bailey AM	Bailey Prize for Human Rights, ANU College of Law
Ms Barbara Blackman	Judith Wright Scholarship Fund

Mr Vijay Boyapati	Mathematical Sciences Institute Prizes in Computer Science
Professor David Brown	D.A. Brown Fund, Faculty of Science
Estate of the late Dorothy Olive Cameron	Dorothy Olive Cameron Bequest Fund, supporting Centre for Archaeological Research
Canberra Tradesmens Club	Noel Butlin Archives Centre
Canberra Versailles Twin Cities Association	John Kirby Memorial Scholarship Fund
Mrs Mary Carver	Research School of Physical Sciences and Engineering
Christian Media Association ACT Incorporated	Spiritual Art Prize
Construction Forestry Mining and Engineering Union	Noel Butlin Archives Centre
Ms Isobel Crawford	Judith Wright Memorial Fund
Mr Ken Crawford	Judith Wright Memorial Fund
Ms Brenda Croft	Joseph and Lindsay Croft Memorial Scholarship Fund
Ms Susan Daw	The John Curtin School of Medical Research
Mr Glenn Dickins	Dickins Engineering Scholarship
Ms Rosemary Douglas	The Duguid Aboriginal Travel Scholarship, National Centre for Epidemiology and Population Health
Gordon Dowling Foundation	Darling Author Fellowship, Humanities Research Centre
Federated Capital Press	Mt Stromlo Commemorative Furniture Scholarships
Forestry Products R & D Corp.	Jack Westoby Lecture and Fellowships, School of Resources, Environment and Society, ANU College of Science
Ms Olivia Forge	Anthony Forge Memorial Fund, Centre for Cross-Cultural Research
Mr Michael Foster OAM (dec), and Mrs Bronwyn Foster	Jazz Studies, ANU School of Music
Friends of the School of Music	Friends of the School of Music Project Fund
Dr William Gladstones	Friends of the School of Music Project Fund
Mrs Margaret Gibb	The John Curtin School of Medical Research
Dr Rosalie Grant	Tom Rhymes Technical Development Award
Mr Anthony Granucci (dec)	The Anthony F. Granucci Fund, Faculty of Arts
Mr Ian Hancock	Phillipa Weeks Memorial Scholarship
Ms Cheryl Hannah	Mt Stromlo Redevelopment Fund
Mr Anthony Hartnell AM	Support for programs in the ANU College of Law
Mr Nobuo Hokari	Minoru Hokari Memorial Fund
Hokari Minoru Kinen and Shogakkukikin Wo Tsonoru Kai	Minoru Hokari Memorial Fund
Mr Neil Humphreys and Ms Hazel Cutluck	Curly Humphreys Scholarship Fund
J.P. Morgan Chase Foundation	Matching Gift Program (Minoru Hokari Memorial Fund)
Mr Mihoko Kadota	Minoru Hokari Memorial Fund
Mr Kent Keith and Mrs Marion Keith	Keith Family Research Fund to support a scholarship in Clinical Haematology

Mrs Thena Kyprianou	Paul Thistlewaite Memorial Scholarship/Prize, Faculty of Engineering and Information Technology
Professor John Love	Research School of Physical Sciences and Engineering
Dr Margaret Lyon	ANU General Purpose Fund
Massachusetts Institute of Technology Haystack Observatory	Mt Stromlo Redevelopment Fund
Mrs Patricia McGregor	Friends of the School of Music Project Fund
Dr Meredith McKinney	Judith Wright Memorial Fund
Mr George Miller	Ann Bates Fund, Research School of Pacific and Asian Studies
Ms Patricia Neil	Dorothy Olive Cameron Bequest Fund
Mr Jonathan Nicholson	Angus Nicholson Honours Scholarship in Science
Estate of the late Bernhard Neumann	Mathematical Sciences Institute
Office of the Commonwealth Ombudsman	Jack Richardson Prize in Administrative Law, Faculty of Law
Ms Quentin O'Keefe	Regional Access Scholarship Program
Pacific Dunlop Ltd	Noel Butlin Archives Centre
Pratt Foundation	Ken Wanganeen Scholarship, Australian National Internship Program
Professor Richard Refshauge	ACT Director of Public Prosecutions Prize for Criminal Law
Royal Thai Embassy, Canberra	ANU College of Asia and the Pacific travel scholarships
Dr Gary Rumble	ANU Regional Access Scholarships
Dr John Seymour and Dr Heather Munro	Seymour Lecture on Biography
Mr Sigurd Sjoquist (dec)	Scandinavian Cultural Fund, National Europe Centre
Dr David Smiles	Margaret Smiles Accompaniment Prize, School of Music
Dick Smith, Dick Smith Foods	Ken Wanganeen Scholarship, Australian National Internship Program
Society of St Vincent de Paul	ANU Alumni Honours Scholarship Fund
Mr Haddon Spurgeon	Friends of the School of Music Project Fund
Mr William Swan	ANU Alumni Honours Scholarship Fund
Professor Mark Westoby	Jack Westoby Lecture and Fellowships, School of Resources, Environment and Society, ANU College of Science
Woodside Energy Ltd	The John Curtin School of Medical Research
Our many Anonymous donors who support	ANU Regional Access Scholarships program; ANU Alumni Honours Scholarships Program; ANU Staff and Student Bushfire Relief Appeal and Mt Stromlo Redevelopment Fund; Judith Wright Scholarship Fund; Thomas Richards Scholarship in Law and the Vice-Chancellor's Strategic Projects

We acknowledge also the generosity of donors who have given more than \$1,000 to the University's many projects and supported a variety of activities over the years:

Alastair Anderson	Rodney Jory	Scitech Development Centre
Anonymous – various	Doreen Kirby	Kazukiyo Shiga
Heinz Arndt (dec)	KPMG Sydney	John and Yuki Sim
Rodney Baxter	Charles Kwong	Susan Simkin
John Beale (dec)	D Kyprianou	SKF Australia Pty Ltd
Wayne Berry	Colin and Elizabeth Laverty	Dione Smith
The Hon Annabelle Bennett	Beng C Lim	Graeme H. Smith
Archibald Brown (dec)	Limb Family Foundation P/L	Smith & Nephew P/L
Yong-Ik Byun	Klaus Loewald	David Solomon
Douglas Clark	Lowell Observatory	Ezekiel Solomon
Mun Suk Chun	Margaret Mackisack	Ian Stanley
Richard Cornes	Sangharmitra Mahanty	Bruce Stillman
Malcolm Crompton	Siddhartha Mahanty	Robert Stokes
David Cusack	Stjepan Marcelja	Kristian Sudjatno
John Dargavel	John Martin	Sugar Australia Pty Ltd
Emanuel Darin	Anthony Mason	Hiroshi Suzuki
Ruth Daroesman	Peter McBurney	Leanne Thistlewaite
Jyotsna Das	Janet McDonald	Donald Tier
Ian Davidson	Jocelyn McFarlane	Caroline Turner
D. Denton	Dr Robert K. Meyer	University of California
Paul Dibb	Teresa Morris-Suzuki	Morna Vellacott
Jeremy Duffield	Yasuhiro Nakamura	David Viquera
Dr Andrew Duguid	Jonathan Nash	The Village Building Co.
Embassy of the Republic of Indonesia	Peter Neumann	Judy Wajcman
Jane Flecknoe	Cecilia Ng	Carolyn Wanganeen
Ernest Frohlich	Matsui Nobuko	Neville Whiffen (dec)
Roy Garstang	Rosemary Oram	Stanley Whitcomb
Michelle Gordon	Ross Parsons (dec)	Susan Wilson
Rebecca Green	Karen Passey	Alan Wyburn
Allan Hawke	Neville Perkins	Issei Yamamura
John Hindmarsh	John Rasmussen	Hock H Yeoh
John Hindmarsh Holdings	Lothar Riebensahm	Minoru Yonezawa
Ross Hohnen (dec)	Brian Robson	

## PATRONS

Patrons are acknowledged as Honorary Members of the Endowment for Excellence for their special commitment and support to the University and its activities through a bequest in their wills. Their support is a significant long-term upholding of the University. As some Patrons notified their intentions indirectly and anonymously via their solicitor, this is not a complete list of Patrons.

Patrons of the Endowment for Excellence: 2006	
Donor	Purpose
Mr John Lambert-Smith	Research School of Chemistry
Mr Kent Keith and Mrs Marion Keith	ANU College of Medicine and Health Sciences
Emerita Professor Beryl Rawson	Humanities, Faculty of Arts
Mr David Walster	ANU School of Music
Dr Ian Caldwell	Faculty of Asian Studies
Ms Fiona Childs	Political Science and Government Communication
Mrs Denise Endean	Australian Foundation for Mental Health Research
Mr and Mrs Fletcher	Protection of Australia's Native Biodiversity
Mr Lloyd Monsburgh	The Australian National University
Mrs Olive Thistlewaite	Paul Thistlewaite Memorial Scholarship, Faculty of Engineering and Information Technology
Dr Roman Rutnam	National Centre for Epidemiology and Population Health
Ms Ellen Blunden	ANU School of Music
Professor Peter Treacy and Dr Barbara Treacy	Sir Mark Oliphant Scholarship Fund, Cambridge Australia Trust
Mr Lance Banbury	University wide research and educational activities
Ms Clare Bishop	ANU School of Music
Anonymous (various)	Humanities Research Centre, Research School of Pacific and Asian Studies, Faculty of Arts, Faculty of Science: Physics; The John Curtin School of Medical Research, ANU Medical School, Scholarships (various); international relations; music; law; medical research, humanities; economics; Research School of Astronomy and Astrophysics; University Library; Support for Indigenous students from regional Australia; Linguistics and research activities

## APPENDIX C (I)

INCOME STATEMENT FOR THE YEAR ENDED 31 DECEMBER 2006		
	31/12/2006	31/12/2005
	\$'000's	\$'000's
<b>OPERATING INCOME</b>		
Donations	6,739	5,909
Investment Income	12,397	7,740
Net ANU Superannuation Reserve Transfer	0	25,000
RSES Scholarship Establishment	2,273	0
Other	66	26
<b>TOTAL OPERATING INCOME</b>	<b>21,475</b>	<b>38,675</b>
<b>OPERATING EXPENDITURE</b>		
Scholarships, Stipends & Chairs	5,242	5,079
Return of Fullbright Funds	0	703
Transfer of University funds	3,505	0
Other Expenditure	208	547
<b>TOTAL OPERATING EXPENDITURE</b>	<b>8,955</b>	<b>6,329</b>
<b>NET SURPLUS (DEFICIT)</b>	<b>\$12,520</b>	<b>\$32,346</b>

## APPENDIX C (II)

BALANCE SHEET AS AT 31 DECEMBER 2006		
Endowment of Excellence		
	31/12/2006	31/12/2005
	\$'000's	\$'000's
<b>EQUITY</b>		
Accumulated Funds	163,782	151,261
Reserves		
Asset Revaluation Reserve	52,324	37,472
<b>Total Reserves</b>	<b>52,324</b>	<b>37,472</b>
<b>TOTAL EQUITY</b>	<b>\$216,106</b>	<b>\$188,733</b>
<b>ASSETS &amp; LIABILITIES</b>		
<b>Financial Assets</b>		
Cash Balance	12,945	8,113
Receivables	10	110
Investments	202,540	180,166
Investments - Shares	625	354
<b>Total Financial Assets</b>	<b>216,121</b>	<b>188,743</b>
<b>Financial Liabilities</b>		
Creditors	(15)	(10)
<b>Total Financial Liabilities</b>	<b>(15)</b>	<b>(10)</b>
<b>NET ASSETS</b>	<b>\$216,106</b>	<b>\$188,733</b>

## APPENDIX C (III)

### Financial Report Summary

	1	2	2	3	3
	2006	2005	2006	2005	2005
	Total Corpus Donation(s) \$	Total Corpus Donation(s) \$	Total Fund at Market Value \$	Total Fund at Market Value \$	Total Available Funds \$
Named Scholarships and Prizes	20,490,786	16,322,208	32,296,462	24,568,242	9,285,563
ANU Excellence and Renewal Program	41,516,745	38,800,196	70,584,531	59,777,101	17,247,702
Inter-institutional Arrangements	4,162,919	3,386,273	7,673,114	6,189,487	2,076,923
Named Foundations	2,738,028	2,376,978	4,091,362	3,389,664	846,252
<b>Endowment Total</b>	<b>68,908,478</b>	<b>60,885,655</b>	<b>114,645,469</b>	<b>93,924,494</b>	<b>36,341,136</b>
University Funds			101,450,350	94,698,885	89,860,870
<b>GRAND TOTAL</b>	<b>68,908,478</b>	<b>60,885,655</b>	<b>216,095,819</b>	<b>188,623,379</b>	<b>116,378,885</b>
Add: Receivables			10,000	110,000	
<b>TOTAL EQUITY per Balance Sheet</b>			<b>\$216,105,819</b>	<b>\$188,733,379</b>	

#### Notes

1. Original preserved donation (prior to any indexation)
2. Sum of LTIP, Shares and Cash on Hand
3. Total fund at market value less preserved corpus and 25 per cent of unrealised LTIP market gains

# THE AUSTRALIAN NATIONAL UNIVERSITY

## CODE OF PRACTICE FOR PHILANTHROPY

(adapted from the Australian Vice-Chancellors' Committee, 2000)

Australian universities have a long and distinguished history of philanthropic support from generous benefactors. It is a tradition of giving and sharing that is vital to the role of universities in advancing knowledge for the common good. Universities recognise that the support of well-motivated citizens and corporations will always be important. There are many people who are eager to make a lasting contribution to the role that universities play. To ensure that The Australian National University earns and maintains the respect and trust of the general public, and that Donors and prospective Donors can have full confidence in the University, The Australian National University commits itself to this Code of Practice.

### Responsibilities of the University

1. The University will welcome and respect the interest of individuals and organisations seeking to contribute to the University.
2. The University will ensure that University staff engaged in Donor liaison and the soliciting of gifts do not grant or accept favours for personal gain and avoid actual or apparent conflicts of interest.
3. The University will ensure that all personnel involved in managing gifts exercise prudent judgement in their stewardship responsibilities.
4. The University will ensure that only authorised representatives of the University undertake solicitation of gifts.
5. The University will not seek or accept gifts where this would be inconsistent with the University's mission.
6. The University will at all times respect information about Donors and prospective Donors and their gifts and will ensure that such information is handled confidentially, to the extent provided by law and consistent with the Donor's wishes.
7. The University will ensure that potential Donors are encouraged to seek independent professional advice about the taxation status and any other business or legal implications of their gifts or potential gifts. University staff may work with such advisers to assist with gift arrangements.
8. The University will ensure that non-cash gifts and gifts-in-kind are evaluated having regard to the University's capacity to use the gift effectively, the benefits they may bring and any on-going costs associated with their use and maintenance.
9. The University will ensure that all gifts are treated in accordance with the Donor's wishes, to the extent consistent with the letter and spirit of the law.
10. The University will ensure that all gifts are dealt with in accordance with all laws and regulations applicable.

11. The University will confirm the acceptance of all gifts in writing.
12. The University reserves the right to decline a gift for any reason.
13. The University will ensure that all Donors have access to its most recent published financial statements.
14. The University will ensure that Donors receive prompt, truthful and complete answers to their inquiries.
15. The University will ensure that all Donors receive appropriate acknowledgment and recognition being mindful of the Donor's wishes.

### **Rights of Donors**

16. A Donor can expect to be informed of the University's mission, of the way the University intends to use the gift, and of its capacity to use gifts effectively for their intended purposes.
17. A Donor can expect that the University and its staff will actively and positively provide relevant information on the University, and the use of, and progress with, the gift.
18. A Donor can expect to be informed of the identity of the University's key personnel involved in managing the gift.
19. A Donor can expect that the behaviour of individuals representing the University will be professional in nature.
20. A Donor can expect to be informed whether those seeking gifts from them are volunteers, University staff, or engaged agents.
21. A Donor can expect that their details will be treated confidentially and will not be shared with any organisation outside the University without their explicit permission.

(Adopted by University Council, 5 April 2002)





