

JANET DAWSON SURVEY

15 FEBRUARY–25 MARCH

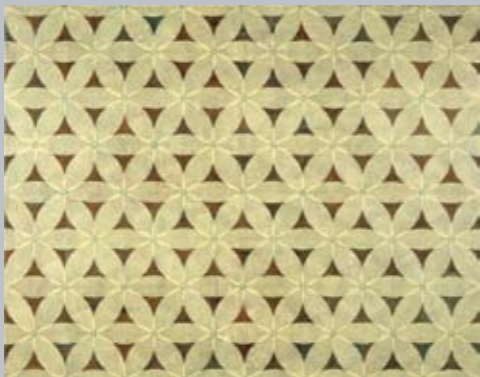


This touring exhibition surveys the work of Janet Dawson, one of Australia's most important painters who pioneered the international avant-garde style. The exhibition includes over 70 works from the 1950s to the present day looking at all facets of Dawson's career including her time in London, Rome, Melbourne, Hobart, Sydney and Binalong. The direct observation of the landscape while living in the country at Binalong has had an enormous impact on her work. Her most recent works of evening skies, clouds and rising moons present a staggering fragile beauty.

Curated by Dr Christine France and presented in association with the Bathurst Regional Art Gallery.

VIVIENNE BINNS

29 MARCH–6 MAY



The first major survey of the work of Vivienne Binns, this exhibition celebrates over 40 years of art practice in Australia. Binns came to prominence in the late 1960s producing paintings with a bold, psychedelic aesthetic. In the 1970s and 1980s Binns' practice was defined by her collaborative community projects. More recently she has explored the notion of the 'unknown artist'. Many territories and genres intersect in the diverse range of works and show her commitment to the essential core of free expression and to generating creative forces in the community.

Curated by Merryn Gates and toured by the Tasmanian Museum and Art Gallery

GREG JOHNS, PATTERNS OF THOUGHT

10 MAY–24 JUNE



A survey of work by South Australian sculptor Greg Johns, this exhibition will trace his practice from the 1970s to the present, including major public scale works, studio pieces and maquettes. Works from the 1970s to the 1980s celebrate and explore scientific and philosophical world views expressed through geometric exchanges. Works from the 1980s to the 1990s express the human connection with nature and ancestral memory, represented as mythic figures and totemic forms, with reference to Islamic and Eastern mysticism through patterning. A growing sense of connection with the land and with the arid Australian landscape in particular is expressed in later works from the 1990s to today.

JAN SENBERGS, A SINGULAR VISION

28 JUNE-5 AUGUST



A comprehensive show of works on paper by Jan Senbergs, one of Australia's most distinguished artists, whose images of our urban habitat, industrial landscapes, coastline and hinterland contribute to our understanding of place. Senbergs' vision is at once romantic and powerful. It resonates with modern urban experience and contemporary sensibilities. His works constitute a singular vision, often brooding and edgy, sometimes skewered with humour and at times grand and romantic. The selection of work is based on thematic groupings: industrial landscape, cityscape, interiors, the figure and landscape-rural coastal and desert.

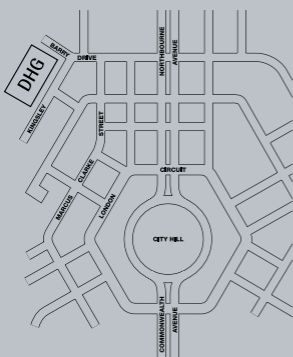
Curated by Elisabeth Cross and toured by Ballarat Fine Art Gallery.

THE DRILL HALL GALLERY

The Australian National University has a lively visual and performing arts program. The University's two contemporary art galleries – the Drill Hall Gallery and the School of Art Gallery – present a changing program of diverse and stimulating exhibitions that highlight achievements in contemporary visual arts both nationally and internationally.

The Drill Hall Gallery supports the arts in the Canberra region by providing exhibitions developed in conjunction with the wide ranging academic interests at ANU and coinciding with major conferences and public events.

Four areas at the Drill Hall Gallery – a large gallery and three intimate exhibition rooms – provide flexibility for large or small exhibitions. This flexibility allows the Drill Hall Gallery to show concurrent exhibitions by different artists.



The Drill Hall Gallery is located at the ANU campus in Kingsley Street, off Barry Drive, Acton.

Hours: 12–5pm,
Wednesday to Sunday.

Admission is free.

Director: Nancy Sever
Exhibitions Officer: Tony Oates
Collections Officer: David Boon

T: +61 2 6125 5832
F: +61 2 6247 2595
E: dhg@anu.edu.au

http://info.anu.edu.au/mac/Drill_Hall_Gallery

Cover image: Ken Unsworth, *Untitled*, 1975, stainless steel
ANU Art Collection. Coombs Photography
All images copyright the artist and reproduced with permission



Southern Cross Ten
The 2007 exhibition program is generously supported by Southern Cross Ten.

**ANU CREATIVE FELLOWS,
WORKS OF SIDNEY NOLAN, ARTHUR BOYD
AND NARRITJIN MAYMURU**

9 AUGUST-16 SEPTEMBER



An exhibition of works by Sidney Nolan, Arthur Boyd and Narritjin Maymuru, who were awarded an Australian National University Creative Arts Fellowships in the 1960s and early 1970s. The art of these three artists focuses on the connection between country and personal creativity. Sidney Nolan will be represented by his nine-panel *River Bend* 1964-65, an Australian dream of water and fecundity.

Arthur Boyd will be represented by the *Caged Painter* series that stemmed from the blond ACT landscape under blue skies encountered by the painter during his Creative Fellowship. Narritjin Maymuru will be represented by a selection of bark paintings revealing – for outsiders – the creation of landscape and custom in his country in Eastern Arnhem Land. Important key works have been loaned from national institutions, the National Museum of Australia, the National Gallery of Australia, the National Gallery of Victoria, The Art Gallery of New South Wales, the Art Gallery of Western Australia, the Nolan Gallery and private collectors.

Curated by Dr Mary Eagle and supported by the ANU Visual Arts Foundation.

ANU ART COLLECTION DONATIONS

Under the Cultural Gifts Program, the University can now receive monetary donations and approved gifts of artworks for the ANU Art Collection. There are procedures and conditions for doing this and interested donors wishing to take advantage of this scheme should contact David Boon, Collections Officer, ANU Art Collection, on +61 2 6125 2501.

TIM STORRIER

20 SEPTEMBER–28 OCTOBER

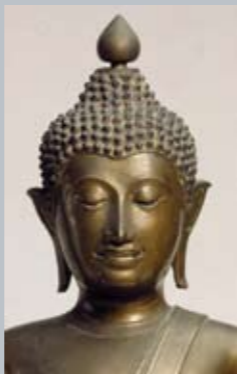


A solo exhibition by one of Australia's leading artists. In any discussion about Tim Storrier's work the one area never mentioned is the importance of the medium of photography. Storrier is renowned for his archetypal paintings of Australia: its open plains, night skies and seas and the ever-present elements of fire. But few know of the way so many of these images began earlier in the experimental medium of photography. This exhibition will be the first to present a broad spectrum of Storrier's photographic works of several decades staged in concert with a selection of his related paintings.

Curated by Bill Wright.

SMILE OF THE BUDDHA: IMAGE OF ENLIGHTENMENT

1 NOVEMBER-16 DECEMBER



A major exhibition on Buddhist art. Works have been selected from China, Japan, the Himalayas, Southeast Asia and Australia to illustrate the theme of peace and serenity, highlighting expressions of Buddhist images across cultures and time. The works express the deep meditative spirit of Buddhist practice and provide an opportunity to contemplate and discover a deeper awareness to an aesthetic which has often appeared mysterious or representative of the 'other'. Spanning 14 centuries, the exhibition also aims to show both the continuity and transformation of forms of the Buddha. The variety of materials provides a comparison between the artistic execution of images of enlightenment in different media: stone, bronze, clay wood, lacquer, gold and pigment on cloth. In order to show the timeless spirit and essence of the image of the Buddha, the exhibition includes a component of contemporary work by leading artists from the region expressing a Buddhist theme.

Curated by Edie Young and Tony Oates.

Buddha Shakyamuni (*Maravijaya*) [detail], Bronze, Thailand, Lan Na 16th Century
Collection: National Gallery of Australia



THE AUSTRALIAN NATIONAL UNIVERSITY

PROGRAM OF EXHIBITIONS 2007



DRILL HALL GALLERY CANBERRA

http://info.anu.edu.au/mac/Drill_Hall_Gallery